

# Modeling of the geological probability procedure for the prediction of high flows in small streams, case study of Medvednica Mt., Croatia

---

Sudar, Vedran; Malvić, Tomislav; Vujnović, Tatjana; Ivšinović, Josip

Source / Izvornik: **Hydrology, 2021, 8**

Journal article, Published version

Rad u časopisu, Objavljena verzija rada (izdavačev PDF)

<https://doi.org/10.3390/hydrology8020083>

Permanent link / Trajna poveznica: <https://um.nsk.hr/um:nbn:hr:169:646056>

Rights / Prava: [Attribution 4.0 International](#) / [Imenovanje 4.0 međunarodna](#)

Download date / Datum preuzimanja: **2024-07-23**



Repository / Repozitorij:

[Faculty of Mining, Geology and Petroleum Engineering Repository, University of Zagreb](#)



## Article

# Modeling of the Geological Probability Procedure for the Prediction of High Flows in Small Streams, Case Study of Medvednica Mt., Croatia

Vedran Sudar <sup>1</sup>, Tomislav Malvić <sup>2</sup>, Tatjana Vujnović <sup>1</sup> and Josip Ivšinić <sup>3,\*</sup>

<sup>1</sup> Croatian Meteorological and Hydrological Service, 10000 Zagreb, Croatia; vedran.sudar@cirus.dhz.hr (V.S.); tvujnovic@cirus.dhz.hr (T.V.)

<sup>2</sup> Faculty of Mining, Geology and Petroleum Engineering, University of Zagreb, 10000 Zagreb, Croatia; tomislav.malvic@rgn.unizg.hr

<sup>3</sup> Field Development, INA-Industry of Oil Plc., Av. V. Holjevca 10, 10000 Zagreb, Croatia

\* Correspondence: josip.ivsinovic@ina.hr

**Abstract:** Floods are defined by maximum water levels or flow of high-water waves. Here, we defined the deterministic method for the calculation of the probability of a high discharge event, named as the Probability Of Success (POS). The POS method previously developed for petroleum subsurface systems has been modified for the surface hydrological system with the purpose of flood prediction. The case study of this research is the small basin of Kašina Stream on Medvednica Mt. (NW Croatia). The data are obtained upstream from the hydrological station Gornja Kašina. The POS model is defined by four categories. Each geological category is described with accompanied events and probabilities. Floods are defined by four categories: total precipitation, total water flow, basement, and maximal water capacity in soil. The categories total precipitation and basement were divided into two sub-categories each: quantity and duration; porosity and soil depth. Data are collected for a hydrometeorological event, namely an intensive convective storm on 24–25 July 2020, when Zagreb was locally hit by heavy urban floods. The presented probability method yielded a probability of 1.76% that such an event could happen to the station. However, the flooding was not recorded. A comparison of the real event and the predicted probability supported the adequacy and applicability of the method, showing it has high reliability. The presented probability model could be easily applied, with small modifications, to the entire area of Northern Croatia for the prediction of small basin flooding events.

**Keywords:** flood; geological categories; probability; Medvednica Mt.; Croatia



**Citation:** Sudar, V.; Malvić, T.; Vujnović, T.; Ivšinić, J. Modeling of the Geological Probability Procedure for the Prediction of High Flows in Small Streams, Case Study of Medvednica Mt., Croatia. *Hydrology* **2021**, *8*, 83. <https://doi.org/10.3390/hydrology8020083>

Academic Editors: Tommaso Caloiero, Carmelina Costanzo and Roberta Padulano

Received: 8 April 2021

Accepted: 12 May 2021

Published: 19 May 2021

**Publisher's Note:** MDPI stays neutral with regard to jurisdictional claims in published maps and institutional affiliations.



**Copyright:** © 2021 by the authors. Licensee MDPI, Basel, Switzerland. This article is an open access article distributed under the terms and conditions of the Creative Commons Attribution (CC BY) license (<https://creativecommons.org/licenses/by/4.0/>).

## 1. Introduction

Occurrences of high waters defined by maximal water level or water wave flow caused by numerous factors that could initiate floods are described in [1,2]. High water studies through rainfall–runoff modeling are important for water resource management, water system design, real-time forecasting, flood design [3], and the construction of hydro-technical objects [4]. Their frequencies/occurrences are used as input for hydrological forecasts, i.e., for protection and risk estimation of flooding. In recent years, Ref. [3] stated that there are 64 different hydrological models, though not all are suitable for every basin. For example, a continuous rainfall–runoff model is used operationally in the Croatian Meteorological and Hydrological Service, named the Sava Super Model [5], which also includes the research area of this paper. Other models used for determining the peak discharge are directed at specifying the characteristics of the Design Hydrograph [6]. However, the model designed in this paper is not similar to any of the mentioned models, although it uses Equation (3) of the Srebrenović unit hydrograph for peak discharge [1,2]. This emphasizes the need for an individual approach to almost every catchment area.

According to Žugaj [1], different factors influence runoff. They can be categorized into five major groups: geographical, geological, biological, climatological, and anthropological factors. In this paper, we confine the model to some geographical (size and slope of catchment area), geological (porosity of soils), and climatological (precipitation) factors.

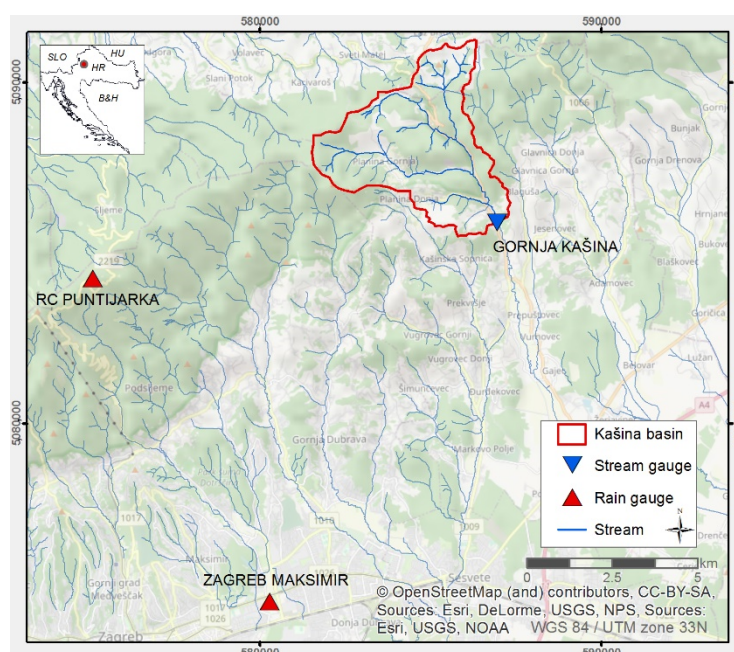
The city of Zagreb is vulnerable to Sava River floods in its lower laying areas and to flash floods from the streams that flow towards the northern areas of the city from Medvednica Mt. [7]. A total of 19 retentions were constructed along Medvednica's streams to protect the city from the flashy flows of the 100-year recurrence discharges. The upper part of Kašina Stream is a rarity among Medvednica's streams in that it has no dam nor retention; thus, it can react naturally to precipitation. This is why it was selected for this research.

Here, we show how the basic POS methodology has been adapted for application in a hydrological flood probability model, conserving its simplicity. The presented probability model, with small corrections, could be applied to the entire area of this mountain.

## 2. The Study Area

The study area of the Kašina Basin is situated in the central northwestern part of Croatia, north of the city of Zagreb (see Figure 1) along the southeastern hills of Medvednica Mt. The basin covers 17.1 km<sup>2</sup>, with altitudes of 195–625 m a.s.l. Its area covers the hilly part of the Kašina Basin, upstream from the “Gornja Kašina” stream gauge (586954.886 E, 5085893.794 N, 195.087 m a.s.l. (WGS84/UTM33N)). The drainage network consists of a few mountainous streams that emerge just below the main Medvednica Mt. ridge. The Kašina Stream starts after the confluence of the 3.7 km long Suhodol and 2.5-km long Šokot Stream. There are two additional small right tributaries—Vukov Dol, 3.2 km long, and Bjelak, 1.9 km long. The Kašina Stream by itself has a length of 3 km to the Gornja Kašina stream gauge.

A measuring instrumentation network that covers the studied watershed consists of two automatic meteorological stations in the vicinity—Zagreb Maksimir (123 m a.s.l.) in the eastern part of the city, RC Puntijarka at Medvednica Mt. (991 m a.s.l.)—and one stream gauge—Gornja Kašina (see Figure 1).



**Figure 1.** The location of the Kašina Basin margins, “Gornja Kašina” stream gauge, rain gauges and river network.

The climate of the study area is assigned to a warm temperate climate (Cfb in the Köppen–Geiger climate classification system) [8]. The long-term (1981–2015) climatological data for Zagreb Maksimir and Puntijarka meteorological stations are given in Table 1.

**Table 1.** Climatological data for Zagreb Maksimir and RC Puntijarka (1980–2015).

Meteorological Station	Annual Average Temperature (°C)	July Average Temperature (°C)	January Average Temperature (°C)	Annual Average Precipitation (mm)	Min Annual Precipitation (mm)	Max Annual Precipitation (mm)
Zagreb Maksimir	11.4	21.7	0.9	853.9	517	1317.8
RC Puntijarka	7	16.4	−1.9	1250.9	763.5	1638.3

RC Puntijarka has lower temperatures and higher precipitation than Zagreb Maksimir because of its significantly higher altitude. The warmest month was July and the coldest month was January at both meteorological stations. Most precipitation occurs during the warm period of the year (April–November) with two precipitation peak months—June and September. The year of 2014 gave the maximal annual precipitation of 1317.8 mm at Zagreb Maksimir but also the maximal monthly recorded precipitation in February, May and June. During the period of 1981–2015, the five “wet” years with precipitation above normal were 2014, 2010, 2013, 1998, 1996, while the years of 2011, 2003, 1990, 2000, 1997 were the five “dry” years, with precipitation below average. A similar pattern was recorded at RC Puntijarka where five “wet” years, with precipitation above normal were 2014, 2010, 1995, 2013, 2005, etc. and the five driest years were 2011, 2003, 2000, 2012 and 1990, with precipitation below average.

CORINE database for Land Cover (CLC 2018) GIS vector layer [9] was used to determine the land use data for the Kašina catchment. There were six CLC classes identified within the study area of which broad-leaved forest covers its majority with 61.8%, transitional woodland/shrub 12.4% and land principally occupied by agriculture, with significant areas of natural vegetation covering 9.5%.

Lithologically, there were [10–13] metamorphic diabase and gabbro (Paleozoic) transgressively overlaid with conglomerate (Miocene), including alternations of clay, marl, limestone and coal.

Slišković and Šarin [14] described permeable deposits in detail and listed impermeable ones. The mountain creek sediments are generally weakly permeable, and intrusive, highly metamorphic and clayey-marlitic rocks are impermeable. Miocene alternation of clastic and clastic-carbonate sediments [14,15] are weakly permeable without significant water reservoirs but, generally, the permeability of unconsolidated and weakly consolidated alluvium depends on granulometry.

Soil types in the analyzed basin could not be extracted in detail because large scale pedological maps do not exist. The most applicable were available in [16–18]. The following soils were recognized:

- rendzina on marl (flysch) or soft limestones;
- rendzina on dolomite and limestone;
- acid, brown soil over metamorphites and clastites;
- brown soil over dolomite.

Those soils are automorphic, where wetting happens solely by precipitation in free filtration through soil over a relatively short period [19]. Rendzina, as soil, is formed over weathered rocks in different climates, but always with high porosity, drainage and weak water retention capacity, over a depth of about 40 cm [19,20]. Acid soil is formed over acidic substrates in mountain ranges with humid or peri-humid climates. It could be with humus, loess, and/or exposed podzolic soil [19]. Brown soil is developed over the carbonates, in a forest environment, on different altitudes, and is relatively shallow [20], with loess and loam components [19].

### 3. Materials and Methods

The methodology of flooding risk estimation applied here is estimated adapting the general probability of success (POS), which is explained and used in numerous papers, e.g., [21–30]. The POS is a simple, flexible, robust, deterministical statistical method developed for the probability calculation of a selected statistical event, based on the multiplication of each method category selected to describe an observed event. The categories are statistical independent events (e.g., [23,27]). The methodology was developed primarily for hydrocarbon systems, but was later adapted in different estimations of numerous geological systems. The POS calculation is based on Equation (1):

$$POS = p_1 \times \dots \times p_{n-1} \times p_n, \quad (1)$$

where:

*POS*—total probability of an observed geological event,

*p*—probability of a particular geological category,

*1–n*—number of geological categories.

Data are derived and a model had been examined for the flash/urban flood that happened in the city of Zagreb (Croatia), during the night of 24–25 July 2020, and compared with data collected in the same period on a hydrological station located upstream, on Medvednica Mt.

The model categories are selected according to geological and hydrological data available for the basin. The number and type are derived and simplified according to the scheme that describes total flow using components [2]. Consequently, the boundary conditions are determined from data on:

- precipitation in the basin and Medvednica Mt.;
- discharge at the section of the “Gornja Kašina” hydrological station;
- soil types and textures.

#### 3.1. Precipitations in Basin and Medvednica Mt.

Data are taken from annual records collected on two automatic meteorological stations: (1) “Zagreb-Maksimir” and (2) “RC Puntijarka”; both for the period 1981–2015 (see Figure 2). Calculation of the annual mean showed a value of 1052.4 mm for the Kašina Stream basin.

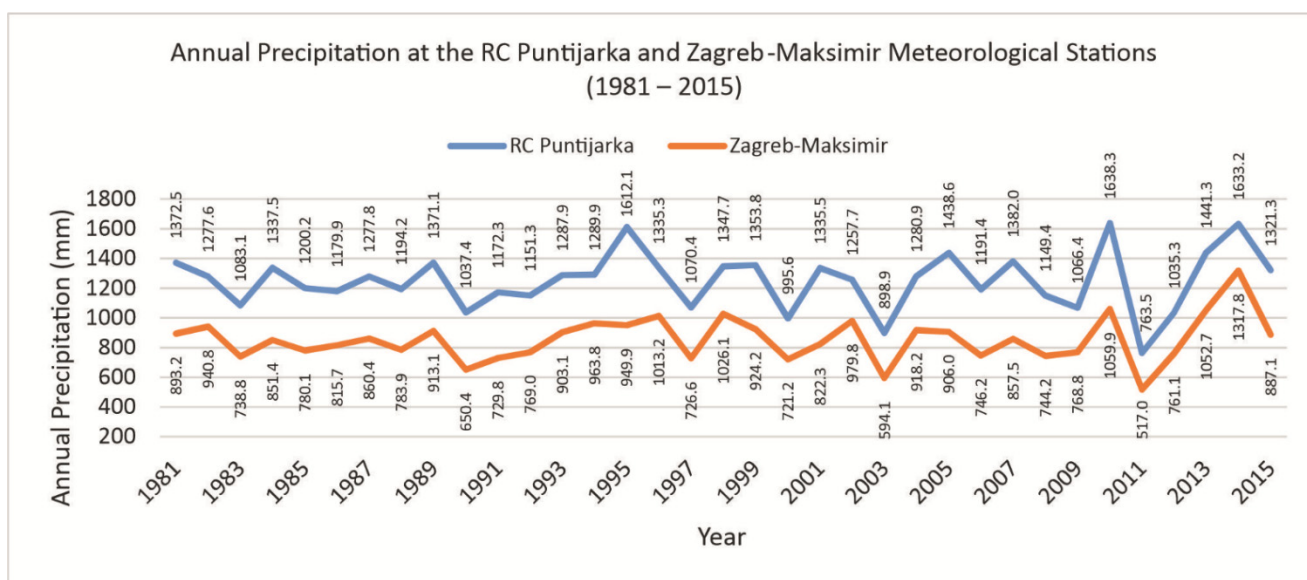


Figure 2. Annual mean precipitations on the “RC Puntijarka” and “Zagreb-Maksimir” station between 1981 and 2015.

### 3.2. Flow and Flow Section of the “Gornja Kašina” Hydrological Station

“Gornja Kašina” hydrological station has the discharge measured for the periods 1980–2015 and 2017–recent. The discharges are used for the calculation of the discharge curve as a function of water-level  $Q = f(H)$ . We analyzed maximal annual discharge 1980–2015 (see Figure 3), with an observed weak positive trend of discharge. Based on annual maximums, three distribution curves were calculated and could be applied as return period (RP) sources for maximal discharges (see Figure 4). All three successfully approximated smaller discharges of lower RP, but we selected the Log Pearson type III curve as the most appropriate due to its good approximation of discharges with longer RP also. Consequently, the discharge of 10-year RP ( $Q_{10}$ ) is  $15.26 \text{ m}^3/\text{s}$ , and the discharge of 100-year RP ( $Q_{100}$ ) is  $41.39 \text{ m}^3/\text{s}$ .

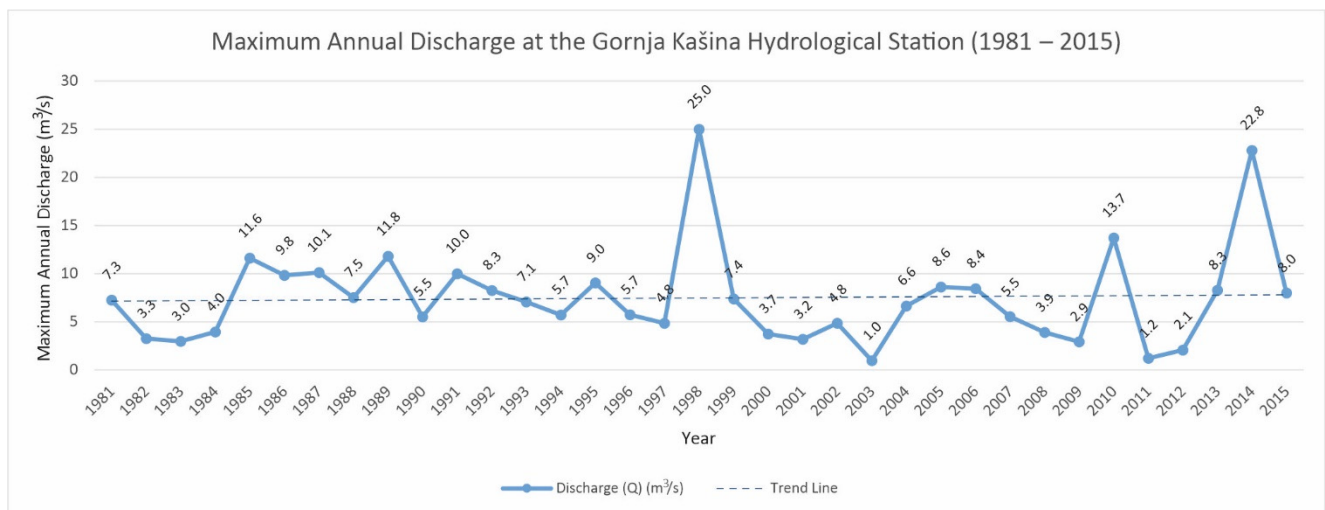


Figure 3. Maximal annual discharges at the “Gornja Kašina” stream gauge between 1981 and 2015.

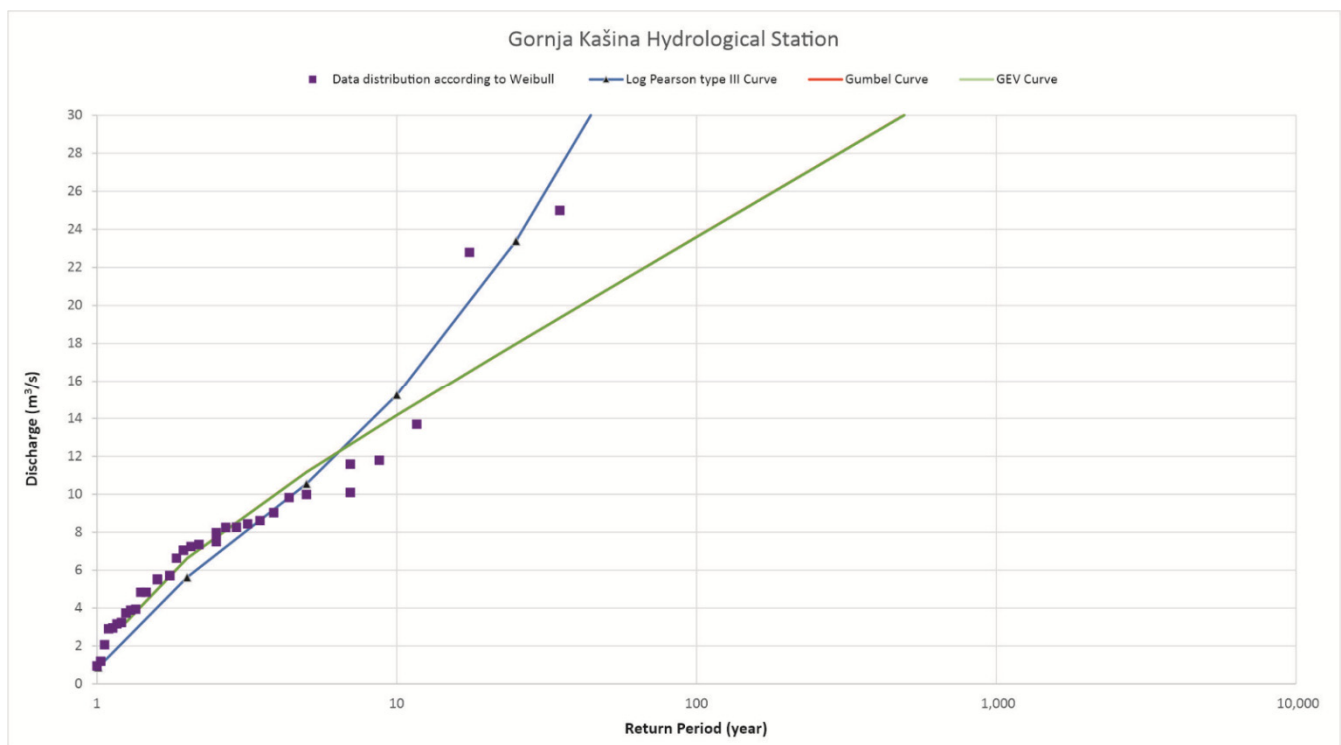
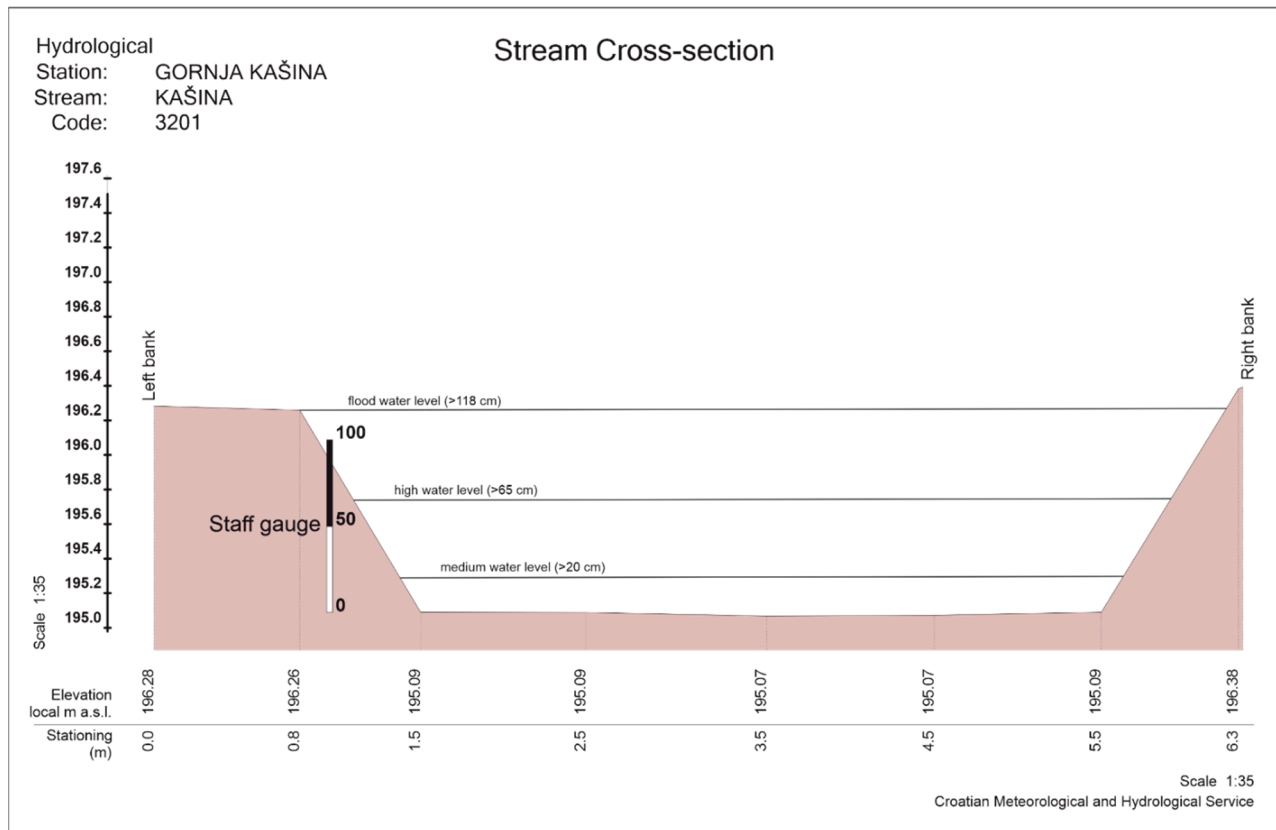


Figure 4. Frequencies of the maximal annual discharges on the “Gornja Kašina” hydrological station.

The vertical section of the “Gornja Kašina” stream gauge (see Figure 5) shows the marginal relative water-level just before start of overflowing—118 cm, with a corresponding bankfull discharge of 15.44 m<sup>3</sup>/s. Figure 5 also shows marginal levels of high and medium water levels.



**Figure 5.** Cross-section of the “Gornja Kašina” hydrological station.

### 3.3. Soil Types and Texture Classes

As previously mentioned, the basin included four types of soils, dominantly automorphic. Systematic soil units were described in [16] including texture class and ecological depth (descriptive). Different, but also quantitative, depths are given by [31]. The applied depths in this paper are shown in Table 2.

**Table 2.** Comparison of ecological and applied soil depth in this work. Source: [31].

Ecological Soil Depth	Evaluation	Applied Description/Depth
<15 cm	Very shallow	Very shallow, <20 cm
15–30 cm	Shallow	Shallow, 25–50 cm
30–60 cm	Medium	Deep, 50–75 cm
50–120 cm	Deep	Very deep, >75 cm
>120 cm	Very deep	

### 3.4. Description of Categories

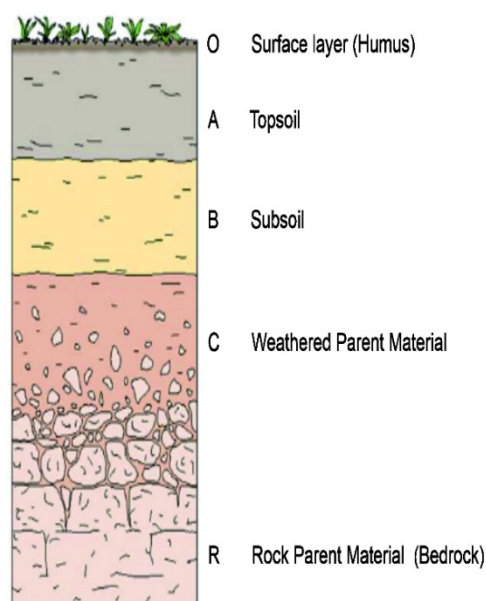
Malvić and Velić [23] determined 5 geological categories with accompanied probabilities, as 5 independent statistical events. Based on such an approach, here 4 hydrological categories are outlined that could describe flooding from components of total flow [2]. The categories shown in Table 3 “Total precipitation” and “Water Flow” are defined from 35-year long input data. The categories “Basement” and “Maximum water capacity in soil” are determined from the cited references.

**Table 3.** Geological–hydrological events presented in four categories with corresponding probabilities.

Basement		Maximal Water Capacity in Soil		Total Precipitation		Water Flow	
Porosity				Quantity			
Very low porosity, <30%	1.00	Low capacity, 21–42 mm/m	1.00	>35.0 mm	1.00	>15.44 m <sup>3</sup> /s	1.00
Low porosity, 30–45%	0.75	Medium-low capacity, 42–83 mm/m	0.75	>26.25 mm	0.75	>10.31 m <sup>3</sup> /s	0.75
Medium porosity, 45–60%	0.50	Medium-high capacity, 83–125 mm/m	0.50	>17.5 mm	0.50	>5.18 m <sup>3</sup> /s	0.50
High porosity, >60%	0.25	High capacity, 125–167 mm/m	0.25	>8.75 mm	0.25	>0.04 m <sup>3</sup> /s	0.25
Unknown porosity	0.05	Very high or unknown capacity, 167–208 mm/m	0.05	≤8.75 mm or unknown	0.05	≤0.04 m <sup>3</sup> /s or unknown	0.05
Soil depth				Duration			
Very shallow, <25 cm	1.00			>3.11 h	1.00		
Shallow, 25–50 cm	0.75			>2.33 h	0.75		
Deep, 50–75 cm	0.50			>1.55 h	0.50		
Very deep, >75 cm	0.25			>0.78 h	0.25		
Unknown	0.05			≤0.78 h or unknown	0.05		

### 3.4.1. Category “Basement”

This category described one of the most important geological–pedological factors for flow/drain conditions. Here, it is considered that the basement is defined as a rocky base for water flow (see Figure 6). Moreover, this category are included two subcategories—“Porosity” and “Soil depth” as shown in Table 4.

**Figure 6.** Soil horizons (layers), taken from [32].

The subcategory “Porosity” was defined according to [33] as soils evaluated in four types according to this variable. The event with  $p = 1.0$  corresponds to the very low porosity soil basement (<30%). The  $p = 0.75$  corresponds to the low value 30–45%,  $p = 0.5$  to the medium value 45–60%,  $p = 0.25$  to the high value of >60%. If porosity is unknown  $p$  is set at 0.05.

The subcategory “Soil depth” is defined according to [31], where soil depths are divided into four sections. Consequently,  $p = 1.0$  corresponds to (very shallow) basement depths <25 cm,  $p = 0.5$  to (shallow) 25–50 cm depths,  $p = 0.5$  to (deep) 50–75 cm depths,  $p = 0.25$  to (very deep) >75 cm depths, and  $p = 0.05$  for events with no data.



**Table 4.** Geological–hydrological category “Basement” and corresponding subcategories with probability values.

Basement			
Porosity		Soil Depth	
Very low porosity, <30%	1.00	Very shallow, <25 cm	1.00
Low porosity, 30–45%	0.75	Shallow, 25–50 cm	0.75
Medium porosity, 45–60%	0.50	Deep, 50–75 cm	0.50
High porosity, >60%	0.25	Very deep, >75 cm	0.25
Unknown	0.05	Unknown	0.05

### 3.4.2. Category “Maximum Water Capacity in Soil”

The category “Maximum Water Capacity in Soil” is introduced with the purpose of representing the marginal quantity of precipitations that could be infiltrated (saturated) into soil before the subsurface and surface flows have been activated. After [34] infiltration, it depends on constants like soil texture and variables such as soil moisture. The second is expressed as the water quantity (i.e., height of the water column in mm) that exists in the soil in a 1 m deep column. If the soil is completely saturated with water, it has reached maximal water capacity. Saturation can change over the time and this is why it can hardly be predicted. Consequently, in this model, the saturation at the beginning was set on zero, i.e., the soil was considered as dry.

Ranges of [35] maximal water capacity in soil based on textures are given in Tables 5 and 6. The value  $p = 1.0$  is valid for a capacity of 21–42 mm/m, when precipitations are sporadically infiltrated and mostly go (through the subsurface or over the surface) towards flow as shown in Table 5. The value  $p = 0.75$  is appended to the interval 43–83 mm/m and  $p = 0.5$  is appended to the interval 84–125 mm/m.  $p$  of 0.25 is appended to the interval 125–167 mm/m and if the capacity value is unknown, then  $p = 0.05$ .

**Table 5.** Geological–hydrological category “Maximal water capacity in soil” with probability values.

Maximal Water Capacity in Soil	
Low capacity, 21–42 mm/m	1.00
Medium-low capacity, 42–83 mm/m	0.75
Medium-high capacity, 83–125 mm/m	0.50
High capacity, 125–167 mm/m	0.25
Very high or unknown capacity, 167–208 mm/m	0.05

**Table 6.** Range of maximal water capacity in soil after texture soil classes.

Texture Class	Water Capacity in Soil (mm/m)
Coarse sand	21–63
Fine sand	63–83
Loamy sand	92–100
Sandy loam	104–117
Fine sandy loam	125–167
Silty loam	167–208
Silty-clayey loam	150–167
Sandy clay	125–142
Clay	100–125

### 3.4.3. Category “Total Precipitation”

This category is defined as part of total outflow/runoff created from effective precipitation. It is divided in two subcategories—“Quantity” and “Duration”. All the presented equations are empirical.

“Quantity” is the total precipitation measured on the “Zagreb–Maksimir” and “RC Puntijarka” meteorological stations. The marginal value  $p = 1$  is determined by the value of precipitation needed for a discharge of  $15.44 \text{ m}^3/\text{s}$  to occur. It is calculated by Equation (2) (Srebrenović’s equations) taken from [1]:

$$P = P_e / \alpha \text{ (mm)}, \quad (2)$$

where:

$P_e$ —effective precipitation in basin (mm);

$\alpha$ —flow coefficient.

Effective precipitation in the basin is calculated using Equation (3) [1]:

$$P_e = V / A \text{ (m)}, \quad (3)$$

where:

$V$ —volume of water wave ( $\text{m}^3$ );

$A$ —basin area ( $\text{m}^2$ ).

The volume of water wave is defined according to Srebrenović Equation (4) [1]:

$$V = Q_m \tau \psi \text{ (m}^3\text{)}, \quad (4)$$

where:

$Q_m$ —maximal flow of the water wave ( $\text{m}^3/\text{s}$ );

$\tau$ —period of surface water collecting, i.e., time of water wave creation (h);

$\psi$ —function ratio between base and maximum flow  $\varphi$ .

The baseflow is not accounted for. Consequently, the variable  $\psi$  is set to 3744 [1]. The time of surface collecting is calculated after Equation (6) and, using the maximal flow ( $15.44 \text{ m}^3/\text{s}$ ), time of surface collecting (3.11 h) and  $\psi$  (3744.0) in Equation (4), the wave volume is  $179,780.89 \text{ m}^3$ . Applying that value in Equation (3), the effective precipitation quantity ( $P_e$ ) is  $0.0105 \text{ m}$  (10.5 mm). The runoff coefficient ( $\alpha$ ) can be calculated using Srebrenović’s Equation (5) [1]:

$$\alpha = 0.80[1 + 0.075(\log_{10} p - \beta)], \quad (5)$$

where:

$p$ —back-period (years);

$\beta$ —factor depending on permeability, afforestation, etc. (values ranging 1–3).

The factor  $\beta$  for low-permeability and low-vegetation soils is about 1, while for permeable and rich-vegetation it is 3. As the Kašina Stream basin is weakly populated, and located in forested parts of Medvednica Mt., the applied factor is  $\beta = 2$ . The RP of  $15.44 \text{ m}^3/\text{s}$ , according to the log Pearson III curve (see Figure 4), is 10.2 years. If the values of  $\beta = 2$  and 10.2 years are input into Equation (5), the flow coefficient ( $\alpha$ ) is 0.74. After [36,37], such a value corresponds to flow from clayey soil and non-flat areas, but this is not like the researched terrain. Therefore, the value 0.30 is accepted, honoring the gentle surface dip and basement represented with medium textured soil (loam, silty-clay loam). Using such a runoff coefficient and effective precipitation (10.5 mm) as in Equation (2) the “Total precipitation” is 35 mm.

Consequently, the precipitation quantity of 35 mm, fallen during 3.11 h, was enough for a flow of  $15.44 \text{ m}^3/\text{s}$ , with a back-period of 10.2 years on the “Gornja Kašina” hydrological station. Therefore, the border value for  $p = 1$  is 35 mm, and smaller probabilities are defined dividing the interval 0–35 into quartiles, i.e.,  $p = 0.75$  is valid for 26.25–34.99 mm,  $p = 0.5$  17.5–26.24,  $p = 0.25$  8.75–17.49,  $p = 0.05$  for less than 8.75 or an unknown value.

The subcategory “Duration” is defined from the activity of total precipitation. The  $p = 1$  is evaluated as necessary when the precipitation fallen inside the Kašina Stream basin flows through the vertical section of the “Gornja Kašina” hydrological station. According to [1], the precipitation duration for small basins is very similar to the time necessary for water collection and the creation of a water wave. The water collection time can be calculated from Picking’s Equation (6) [1]:

$$T_c = 0.039 (L/I_{\max}^{0.25})^{0.76} \text{ (min)}, \quad (6)$$

where:

$L$ —the longest path of water flow (m),

$I_{\max}$ —the basin dip that can be calculated after Equation (7).

$$I_{\max} = \Delta H/L, \quad (7)$$

where:

$\Delta H$ —the elevation difference between the highest basin point and runoff section (m).

In the observed basin  $\Delta H = 430$  m and  $L = 26,087$  m, which are determined using GIS. According to Equation (7), the basin dip  $I = 0.02$ , i.e., 2%. According to Equation (6) time of concentration is 186.36 min (3.11 h). Such a value is a boundary for  $p = 1$  (subcategory “Duration”, 3.11 h) which is again divided into quartiles as shown in Table 7. Therefore,  $p = 0.75$  is appended to the interval 3.10–2.33 h and  $p = 0.5$  to the interval 2.32–1.55 h.  $p$  of 0.25 is appended to the interval 1.54–0.78 and  $p = 0.05$  for less than 0.78 or unknown.

**Table 7.** Geological–hydrological category “Total Precipitation” and corresponding subcategories with probability values.

Total Precipitation			
Quantity		Duration	
>35.0 mm	1.00	>3.11 h	1.00
>26.25 mm	0.75	>2.33 h	0.75
>17.5 mm	0.50	>1.55 h	0.50
>8.75 mm	0.25	>0.78 h	0.25
≤8.75 mm or unknown	0.05	≤0.78 h or unknown	0.05

#### 3.4.4. Category “Water Flow”

The hydrological category “Water flow” represents the total water quantity flowing through the section (see Figure 5) and just before the observed precipitation. The boundary condition for this category is defined from this section (see Figure 5) and the water-level (see Section 3.2). The flooding value, i.e., the value when outpouring from the bed starts is 118 cm, with a flow of 15.44 m<sup>3</sup>/s. It is the lower boundary for  $p = 1$ . The minimal probability  $p = 0.05$  is defined for less than 0.04 m<sup>3</sup>/s and a stage of 4 cm. Other values are calculated as one-third of the interval 0.04–15.44 m<sup>3</sup>/s shown in Table 8. Consequently,  $p = 0.75$  is appended to the interval 15.44–10.31 m<sup>3</sup>/s and  $p = 0.5$  to 10.30–5.18 m<sup>3</sup>/s.  $p$  of 0.25 is appended to the interval 5.17–0.04 m<sup>3</sup>/s.

**Table 8.** Geological–hydrological category “Water flow” with probability values.

Water Flow	
>15.44 m <sup>3</sup> /s	1.00
>10.31 m <sup>3</sup> /s	0.75
>5.18 m <sup>3</sup> /s	0.50
>0.04 m <sup>3</sup> /s	0.25
≤0.04 m <sup>3</sup> /s or unknown	0.05

#### 4. Results

The Kašina Stream basin, upstream from the “Gornja Kašina” stream gauge, mostly is covered by rendzina on marl or soft limestone [16,17,19]. Since most precipitation reaches such soils, they were chosen as representative soils for the study area. According to [16], such soils have a silty–clayey to clayey loam texture.

Direct porosity data were not available. With the presumption that sandy soil contains more pores than clayey, i.e., more than rendzina on marl/flysch or soft limestone, the soil is considered as low-porosity with a range of 30–45%. According to Table 3,  $p = 0.75$ . Ecological soil depth [16] of the chosen soils is defined as medium, suggesting that in the interval 50–75 cm a probability value of  $p = 0.50$  occurs. Multiplication of subcategories’  $p$  values results in a  $p$  value of the category “Basement”  $p = 0.375$ .

The texture class of soil rendzina on marl or soft limestone has a range of maximum capacity for water between 125 and 167 mm/m. The probability value of that event according to Table 3 is  $p = 0.25$ .

The quantity of total precipitation in the night of 24–25 July 2020 on the “Zagreb-Maksimir” station was 64.9 mm and 57.3 mm on the “RC Puntijarka” station. The mean value of 61.1 mm was used as input for the subcategory “Quantity”. Duration, i.e., subcategory “Duration” was set to 3 h (as a mean of 2.67 h on the “Zagreb-Maksimir” and 3.33 h on the “RC Puntijarka”). The multiplication of the  $p$  values of subcategories according to Table 3 “Quantity” ( $p = 1.0$ ) and “Duration” ( $p = 0.75$ ) gave  $p = 0.75$  as a probability value of the category “Total precipitation”.

Just before the observed event on the “Gornja Kašina” hydrological station, the discharge was 0.15 m<sup>3</sup>/s, which is the input value for the category “Water flow”. According to Table 3, the  $p$ -value of this category is  $p = 0.25$ .

According to Equation (1), for the Kašina Stream basin, the probability value  $p = 0.0176$ . This result is interpreted as the probability of flooding during the event in the night of 24–25 July 2020 (1.76%). In reality, a flood did not happen, but rather the flow was slightly above the medium water level threshold (27 cm/1.19 m<sup>3</sup>/s), which corresponds to the calculated probability. A flood could happen if the duration of precipitation or the amount of precipitation were higher.

#### 5. Discussion

Each analytical method has a range of uncertainties, coming from different sources. It is valid for measurements as well as the calculation-based method. One simple, but robust, probability calculation method is presented here, built around hydrological categories. Such inputs are of mixed types, partially based on measurements, partially on the expert selection of data and data ranges. Therefore, two main uncertainties come from measurement and/or equipment errors, but also from the expert selection of the appropriate intervals described in the researched hydrological region. This second source is even more variable and sensitive, stressing the role of expert knowledge. The presented model is highly bounded for climate, relief, and population in the Medvednica Mt. area, Northern Croatia. Some other research groups could estimate the category events and ranges, probably in slightly different intervals, but the main estimation idea would be kept and comparable with the given results.

The basement porosity/soil depths, soil water capacity and total precipitation are clearly spatial and random variables. It means that they can be estimated as average or median from the total measured points, with no regard to their spatial location, but also firstly interpolated and later estimated from interpolated grid cells, where interpolated values are also considered as “hard data” as well as the original measurements. This means that uncertainties in sampling from interpolated maps also included uncertainties of interpolation methods. Consequently, they highly depend on the number of original “hard data” as the main factor in the selection of interpolation (e.g., inverse distance weighting, nearest neighborhood, Kriging, and even simulation). Such uncertainties must be estimated in each particular case, and a decision must be made regarding the use of only original measurements (like in this research) or interpolated values. A recommendation can be given that for highly dense hard datasets ( $n > 50$  points); interpolation is the preferred option for obtaining values applied for a histogram, descriptive statistics, and cumulative distribution curves.

Regarding topography and climate, this model should be firstly confirmed several times in a similar climate and relief (in a broad sense, in Central Europe, excluding the Alps and Carpathians) and the success rate of such a calculation in the prediction of risky and extreme hydrological events should be determined. Only after such models prove their applicability in the entire Northern Croatian and the adjacent regions of Central Europe, could they be tested in other topographies and, especially, climate zones.

Other sources of uncertainties could not be in the spatial distribution of data or expert opinions about interval values, not even in the selected categories, but within the hydrological variables themselves. If, e.g., the runoff coefficient ( $R_c$ ) and recession time ( $T_c$ ) are observed as critical ones that control event runoff characteristics at a small catchment scale [38], the results (obtained in Lower Austria) showed that the  $R_c$  and their variability tend to be largest for the tile drainages and the main outlet, with larger values in January/February than in July/August.  $T_c$  variability was not oversized, but the largest at the main outlet and the smallest for the tile drainages. Therefore, the authors [38] explained changes in groundwater levels (due to shallow flows) as the main factors that influenced  $R_c$  and  $T_c$ , more important than soil moisture or precipitation. In our work, such additional subsurface flows were not considered for hydrological systems on Medvednica Mt., although they could exist, but they are not significant in the context of their contribution to the analyzed waterflow. Yet, similarly, in the system of the Gornja Kašina Stream, a critical variable event of extreme precipitation occurred, also in late July.

Moreover, in the same area (Lower Austria) another research study was performed to conclude the variability of the event runoff characteristics as a result of climate and hydro-geological conditions (for four “small” catchments with different hydro-geological settings mapped during field work [39]). A connection between the larger event runoff coefficients and flow peaks in catchments with high mean annual precipitation was observed. Interestingly, a weak poor relation between the previous precipitation and event runoff was proven, but the initial flow is the main factor defining the runoff coefficient and event peaks in all analyzed catchments. Those two examples pointed out the very local behavior of hydrological variables even in the catchments belonging to a very similar climate and covering comparable catchment areas.

## 6. Conclusions

In this article, definition and application of a model for flood prediction is presented. The model is developed for the “Gornja Kašina” hydrological station and its corresponding drainage area. It consists of geological-hydrological categories, compiled in a standard probability of success calculation procedure.

That approach was tested on the data collected during the most recent hydrometeorological extreme event on 24–25 July 2020. During that night, the city of Zagreb had localized urban floods in some of its parts, but the event did not register as a flood at the Gornja Kašina stream gauge. Such a scenario has been described with a probability calculation

of  $p = 1.76\%$  at the station. The obtained probability value proved the applicability of the methodology for the prediction of future possible flooding in the area of Medvednica Mt. The given methodology would also improve flood control mechanisms as to better define micro zones for flood defenses contrary to many hydrological models for broader areas. In the mentioned models, the catchment area of Kašina Stream would be just one cell on a flood risk map and unsuitable for individual observation. With this model, catchment risk assessment is independent and avoids interpolation algorithm errors.

The procedure, as its biggest advantage, can be easily adapted for similar catchments in Croatia, fed by data from other hydrological stations or meteorological prognoses. In such cases, defined categories, and their boundary values for “Basement” and “Maximal capacity” can be valid for any hydrological area. However, its application in other basins demands the modification of boundary values in categories “Precipitations” and “Water flow”. The defined categories do not depend on climate zone, and therefore could be used in areas with different precipitations. The disadvantage of the given model is that it is not highly sensitive to all hydrological factors. Due to its resistance to various dynamic hydrological conditions, the model can be considered as robust.

**Author Contributions:** V.S. refined the idea for the study; collected, analyzed and interpreted data; carried out the literature and manual searches; wrote the paper. T.M. had the initial idea and later on refined the idea; provided input on the design and analyses; reviewed and provided substantive feedback on the paper and coordinated the study. J.I. provided input on the design and interpretation and reviewed and provided feedback on the paper. T.V. carried out literature searches; collected data and provided input on the analyses; reviewed and provided feedback on the paper. All authors have read and agreed to the published version of the manuscript.

**Funding:** This research received no external funding.

**Acknowledgments:** This research was partially carried out as part of the university project “Mathematical methods in geology V”, funded in 2021 by the Faculty of Mining, Geology and Petroleum Engineering (Zagreb, HR).

**Conflicts of Interest:** The authors declare no conflict of interest.

## References

1. Žugaj, R. *Hidrologija*; Faculty of Mining, Geology and Petroleum Engineering, University of Zagreb: Zagreb, Croatia, 2000; p. 407. (In Croatian)
2. Žugaj, R. *Hidrologija*, 2nd ed.; Faculty of Mining, Geology and Petroleum Engineering, University of Zagreb: Zagreb, Croatia, 2015; p. 538. (In Croatian)
3. Lavtar, K.; Bezak, N.; Šraj, M. Rainfall-Runoff modeling of the nested non-homogeneous Sava river sub-catchments in Slovenia. *Water* **2019**, *12*, 128. [CrossRef]
4. Srebrenović, D. *Problemi Velikih Voda*; Tehnička Knjiga: Zagreb, Croatia, 1970; p. 278. (In Croatian)
5. Sava, S.M. Available online: [https://meteo.hr/infrastruktura.php?section=sustavi\\_upozorenja&param=sava\\_sm\\_upozorenja](https://meteo.hr/infrastruktura.php?section=sustavi_upozorenja&param=sava_sm_upozorenja) (accessed on 28 January 2021). (In Croatian)
6. Mlynski, D.; Walega, A.; Ksiazek, L.; Florek, J.; Petroselli, A. Possibility of using Selected rainfall-runoff models for determining the design hydrograph in mountainous catchments: A case study in Poland. *Water* **2020**, *12*, 1450. [CrossRef]
7. Croatian Disaster Risk Reduction Platform: Disaster Risk Assessment for the Republic of Croatia. 2019. Available online: [https://civilna-zastita.gov.hr/UserDocsImages/DOKUMENTI\\_PREBACIVANJE/PLANSKI%20DOKUMENTI%20I%20UREDBE/Procjena%20rizika%20od%20katastrofa%20za%20RH.pdf](https://civilna-zastita.gov.hr/UserDocsImages/DOKUMENTI_PREBACIVANJE/PLANSKI%20DOKUMENTI%20I%20UREDBE/Procjena%20rizika%20od%20katastrofa%20za%20RH.pdf) (accessed on 26 April 2021).
8. Nimac, I.; Perčec Tadić, M. New 1981–2010 Climatological Normals for Croatia and Comparison to Previous 1961–1990 and 1971–2000 Normals. In Proceedings of the GeoMLA Conference, Belgrade, Serbia, 23–26 June 2016; Faculty of Civil Engineering, University of Belgrade: Belgrade, Serbia, 2016; pp. 79–85.
9. CORINE Database for Land Cover. Available online: <https://land.copernicus.eu/pan-european/corine-land-cover/clc2018> (accessed on 26 April 2021).
10. Šikić, K.; Basch, O.; Šimunić, A. (1978): *Osnovna Geološka Karta SFRJ 1:100.000, List Zagreb L33–80*.—Institut za Geološka Istraživanja, Zagreb (1972); Savezni Geološki Institut: Beograd, Serbia, 1977. (In Croatian)
11. Šimunić, A.; Pikija, M.; Hećimović, I. (1983): *Osnovna Geološka Karta SFRJ 1:100.000, List Varaždin L33–69*.—Geološki Zavod, Zagreb, (1971–1978); Savezni Geološki Institut: Beograd, Serbia, 1982. (In Croatian)
12. Basch, O. (1983): *Osnovna Geološka Karta SFRJ 1:100.000, List Ivanić-Grad L33–81*.—Geološki Zavod, Zagreb; OOUR za Geologiju i Paleontologiju (1969–1976); Savezni Geološki Institut: Beograd, Serbia, 1981. (In Croatian)

13. Šikić, K. *Geološki Vodič Medvednice*; Institut za Geološka Istraživanja and INA-Industrija Nafta d.d. Zagreb, Naftaplin: Zagreb, Croatia, 1995; p. 199. (In Croatian)
14. Slišković, I.; Šarin, A. *Osnovna Hidrogeološka Karta Republike Hrvatske 1:100.000, Tumač za List Ivanić Grad*; Institut za Geološka Istraživanja: Zagreb, Croatia, 1999; p. 47. (In Croatian)
15. Lovrić, F. Hydrogeological Features of Water Springs in the Area of the Northeast Prigorje. Master's Thesis, Faculty of Geotechnical Engineering, University of Zagreb, Varaždin, Croatia, 19 September 2016. (In Croatian, with Abstract in English)
16. Husnjak, S. *Inventarizacija Poljoprivrednog Zemljišta Grada Zagreba i Preporuke za Poljoprivrednu Proizvodnju*; Faculty of Agriculture, University of Zagreb: Zagreb, Croatia, 2008; p. 137. (In Croatian)
17. Pedologija. Available online: [http://pedologija.com.hr/iBaza/DPK-Hr\\_2019/index.html#5/45.948/16.265](http://pedologija.com.hr/iBaza/DPK-Hr_2019/index.html#5/45.948/16.265) (accessed on 24 January 2021). (In Croatian)
18. Tlo i biljka. Available online: [http://tlo-i-biljka.eu/iBaza/Pedo\\_HR/index.html](http://tlo-i-biljka.eu/iBaza/Pedo_HR/index.html) (accessed on 24 January 2021). (In Croatian)
19. Klasifikacija Tala Hrvatske. Available online: <http://os-akanizlica-pozega.skole.hr/upload/os-akanizlica-pozega/images/static3/3017/File/KLASIFIKACIJA%20TALA%20HRVATSKE.pdf> (accessed on 24 January 2021). (In Croatian)
20. Osnove Pedološke Klasifikacije. Available online: <http://www.fazos.unios.hr/upload/documents/Osnove%20Bilinogojstva%20002%20c%20osnove%20pedolo%C5%A1ke%20klasifikacije.pdf> (accessed on 24 January 2021). (In Croatian)
21. Malvić, T. Oil-Geological Relations and Probability of Discovering New Hydrocarbon Reserves in the Bjelovar Sag. Ph.D. Thesis, Faculty of Mining, Geology and Petroleum Engineering, University of Zagreb, Zagreb, Croatia, 21 March 2003. (bilingual, In Croatian and English)
22. Malvić, T.; Rusan, I. Investment risk assessment of potential hydrocarbon discoveries in a mature basin; Case study from the Bjelovar sub-basin, Croatia. *Oil Gas Eur. Mag.* **2009**, *35*, 66–72.
23. Malvić, T.; Velić, J. Stochastically improved methodology for probability of success (POS) calculation in hydrocarbon systems. *RMZ Mater. Geoenvironment* **2015**, *62*, 149–155.
24. Malvić, T.; Velić, J.; Režić, M. Geological probability calculation of new gas discoveries in wider area of Ivana and Ika Gas Fields, Northern Adriatic, Croatia. *Mater. Geoenvironment* **2016**, *63*, 127–138. [[CrossRef](#)]
25. Novak, K. Conditions Surface Transport and Geological Storage Modelling of Carbon-Dioxide into Northern Croatian Neogene Sandstone Reservoirs, Case Study Ivanić Field. Ph.D. Thesis, Faculty of Mining, Geology and Petroleum Engineering, University of Zagreb, Zagreb, Croatia, 13 April 2015. (In Croatian, with Abstract in English)
26. Ivšinić, J. Selection and Geomathematical Calculation of Variables for Sets with Less than 50 Data Regarding the Creation of an Improved Subsurface Model, Case Study from the Western Part of the Sava Depression. Ph.D. Thesis, Faculty of Mining, Geology and Petroleum Engineering, University of Zagreb, Zagreb, Croatia, 7 November 2019. (In Croatian, with Abstract in English)
27. Malvić, T.; Ivšinić, J.; Velić, J.; Sremac, J.; Barudžija, U. Increasing Efficiency of Field Water Re-Injection during Water-Flooding in Mature Hydrocarbon Reservoirs: A Case Study from the Sava Depression, Northern Croatia. *Sustainability* **2020**, *12*, 786. [[CrossRef](#)]
28. Malvić, T.; Pimenta Dinis, M.A.; Velić, J.; Sremac, J.; Ivšinić, J.; Bošnjak, M.; Barudžija, U.; Veinović, Ž.; Sousa, H.F.P. Geological Risk Calculation through Probability of Success (PoS), Applied to Radioactive Waste Disposal in Deep Wells: A Conceptual Study in the Pre-Neogene Basement in the Northern Croatia. *Processes* **2020**, *8*, 755. [[CrossRef](#)]
29. Ivšinić, J.; Malvić, T.; Velić, J.; Sremac, J. Geological Probability of Success (POS), case study in the Late Miocene structures of the western part of the Sava Depression, Croatia. *Arab. J. Geosci.* **2020**, *13*, 1–12. [[CrossRef](#)]
30. Ivšinić, J.; Pleteš, V. Risk and Financial Cost Management of Injection Wells in Mature Oil Fields. *J. Risk Financ. Manag.* **2021**, *14*, 184. [[CrossRef](#)]
31. Rai, R.K.; Singh, V.P.; Upadhyay, A. Soil Analysis. In *Planning and Evaluation of Irrigation Projects*, 1st ed.; Elsevier: Amsterdam, The Netherlands, 2017; pp. 505–523. [[CrossRef](#)]
32. Baletić, I. Sjetvena Grbica (*Lepidium sativum* L.) as a Potential Hyperaccumulator of Copper. Master's Thesis, Faculty of Chemistry and Technology, University of Split, Split, Croatia, 12 July 2017. (In Croatian, with Abstract in English)
33. Gračanin, M. *Pedologija (Tloznanstvo), II dio, Fiziografija Tala*; Poljoprivredni Nakladni Zavod: Zagreb, Croatia, 1947; p. 234. (In Croatian)
34. Brouwer, C.; Goffeau, A.; Heibloem, M. (1985): *Irrigation Water Management: Training Manual No. 1—Introduction to Irrigation*; FAO: Rome, Italy, 1985.
35. Plant and Soil Sciences eLibrary. 2021. Available online: <http://passel-test.unl.edu/beta/pages/informationmodule.php?idinformationmodule=1130447039&topicorder=10&maxto=10&mintto=1> (accessed on 19 January 2021).
36. Mahmoud, S.H.; Alazba, A.A. Hydrological Response to Land Cover Changes and Human Activities in Arid Regions Using a Geographic Information System and Remote Sensing. *PLoS ONE* **2015**, *10*, e0125805. [[CrossRef](#)]
37. Tsutsumi, K.J.A.; Berndtsson, R. Surface and subsurface water balance estimation by the groundwater recharge model and a 3-D two-phase flow model/Estimation de bilan hydrologique de surface et de subsurface à l'aide de modèles de recharge de nappe et d'écoulement diphasique 3-D. *Hydrol. Sci. J.* **2004**, *49*, 205–226. [[CrossRef](#)]
38. Chen, X.; Parajka, J.; Széles, B.; Strauss, P.; Blöschl, G. Spatial and temporal variability of event runoff characteristics in a small agricultural catchment. *Hydrol. Sci. J.* **2020**, *65*, 2185–2195. [[CrossRef](#)] [[PubMed](#)]
39. Chen, X.; Parajka, J.; Széles, B.; Valent, P.; Viglione, A.; Blöschl, G. Impact of Climate and Geology on Event Runoff Characteristics at the Regional Scale. *Water* **2020**, *12*, 3457. [[CrossRef](#)]