

Petrological characteristics of clastic sedimentary rocks from the St. Barbara ore mine in Rude near Samobor

Bilić, Šime; Garašić, Vesnica

Source / Izvornik: **Rudarsko-geološko-naftni zbornik, 2021, 36, 121 - 135**

Journal article, Published version

Rad u časopisu, Objavljena verzija rada (izdavačev PDF)

<https://doi.org/10.17794/rgn.2021.1.10>

Permanent link / Trajna poveznica: <https://um.nsk.hr/um:nbn:hr:169:910755>

Rights / Prava: [Attribution 4.0 International](#) / [Imenovanje 4.0 međunarodna](#)

Download date / Datum preuzimanja: **2024-07-23**



Repository / Repozitorij:

[Faculty of Mining, Geology and Petroleum Engineering Repository, University of Zagreb](#)



Petrological characteristics of clastic sedimentary rocks from the St. Barbara ore mine in Rude near Samobor

Rudarsko-geološko-naftni zbornik
(The Mining-Geology-Petroleum Engineering Bulletin)
UDC: 550.4: 552.5
DOI: 10.17794/rgn.2021.1.10

Original scientific paper



Šime Bilić¹; Vesnica Garašić¹

¹ Faculty of Mining, Geology and Petroleum Engineering, University of Zagreb, Pierottijeva 6, 10 000 Zagreb, Croatia, 0000-0002-1138-0948

² Faculty of Mining, Geology and Petroleum Engineering, University of Zagreb, Pierottijeva 6, 10 000 Zagreb, Croatia, 0000-0002-4752-6937

Abstract

In the scope of this research, the petrographic and geochemical analyses of clastic sedimentary rocks from the St. Barbara, copper and iron ore mine in Rude near Samobor, have been made, aiming to classify and determine the provenance and environment of formation of clastic sedimentary rocks, as well as the influence of hydrothermal fluids on their properties. Eight samples were collected in total from different locations in the mine. Six of those samples have been studied in detail. The results showed structural and geochemical variability and uneven hydrothermal alteration intensity in the samples. Based on petrographic analyses, three rocks are classified as sublithoarenite, quartz arenite and quartz greywacke. Three of the samples are classified as ore breccia, ore sandstone, and ore silt-sandstone due to the pronounced hydrothermal alterations and ore mineralisation. Comprehensively, petrographic and geochemical analyses indicate that the source rocks of the investigated clastic sedimentary rocks were felsic ($La/Sc = 0.9-6.2$; $Th/Sc = 1.3-2.4$), most probably sedimentary, possibly resedimented rocks. The extent of source rock weathering was very high (Chemical Index of Alteration CIA = 52.1 - 81.3 %) and the geotectonic position of the sedimentary basin was very likely to be at the passive continental margin.

Keywords:

clastic sedimentary rocks; petrography and geochemistry; provenance; St. Barbara ore mine in Rude; Samobor Mountains

1. Introduction

Sedimentary clastic rocks are characterized by mineralogical and chemical composition as well as texture that are directly dependent on: a) the source rocks and their geotectonic position, b) the weathering conditions such as climate, relief and exposure time to the weathering process, c) the mode and duration of transport to the sediment basin and d) the processes that take place after sediment deposition such as diagenesis and hydrothermal alteration. Detailed micropetrographic investigation of clastic rock particles, which include the observation of undulose extinction of monocrystalline or polycrystalline quartz, the presence of feldspar and rock fragments, the determination of their proportions, the identification of particle roundness and their degree of sorting as well as determination of other minerals and mineral alterations represent a classic approach to the study of the origin of clastic sediments. More recently, geochemical composition of clastic rocks has often been in use for this purpose (Bhatia, 1983; Roser and Korsch, 1986; Nesbitt and Young, 1989; McLennan et al. 1993; Herron, 1988; Rahman and Suzuki, 2007;

Lužar Oberiter et al., 2012). Thereby, the distribution of concentrations of major elements, rare earth elements and in particular, the elements such as La, Ce, Nd, Y, Th, Zr, Hf, Nb, Ti and Sc have been shown as very suitable chemical provenance indicators of sandstone due to their low mobility in sediment processes (Rahman and Suzuki, 2007).

In the area of the copper and iron mine in Rude near Samobor, numerous geological and petrological research studies have been made (Hacquet, 1784; Vukotinović, 1855, 1873 a, 1873 b; Gorjanović - Kramberger, 1884; Šuklje, 1942; Herak, 1956 and Šikić et al., 1972). The first detailed description of the mineral deposit itself and mineralization was given by Šinkovec (1971). He pointed out that the ore mineralization occurs within the light to dark gray Permian sandstones consisting of detrital grains of quartz, muscovite, biotite, rutile, feldspar, tourmaline, barite, amphibole, apatite and fragments of quartzite, chert, quartz-sericite schist, and sandstone. Šinkovec noted that the matrix usually consists of clay minerals, sericite, quartz and organic matter, while the matrix of chemogenic origin, in the form of siderite, quartz, barite or anhydrite, is rarely present. Recent chemical and mineralogical data related to the ore mineralization of the St. Barbara ore mine was given by Palinkaš et al. (2010), who concluded that this

Corresponding author: Šime Bilić
sime.bilic@rgn.hr

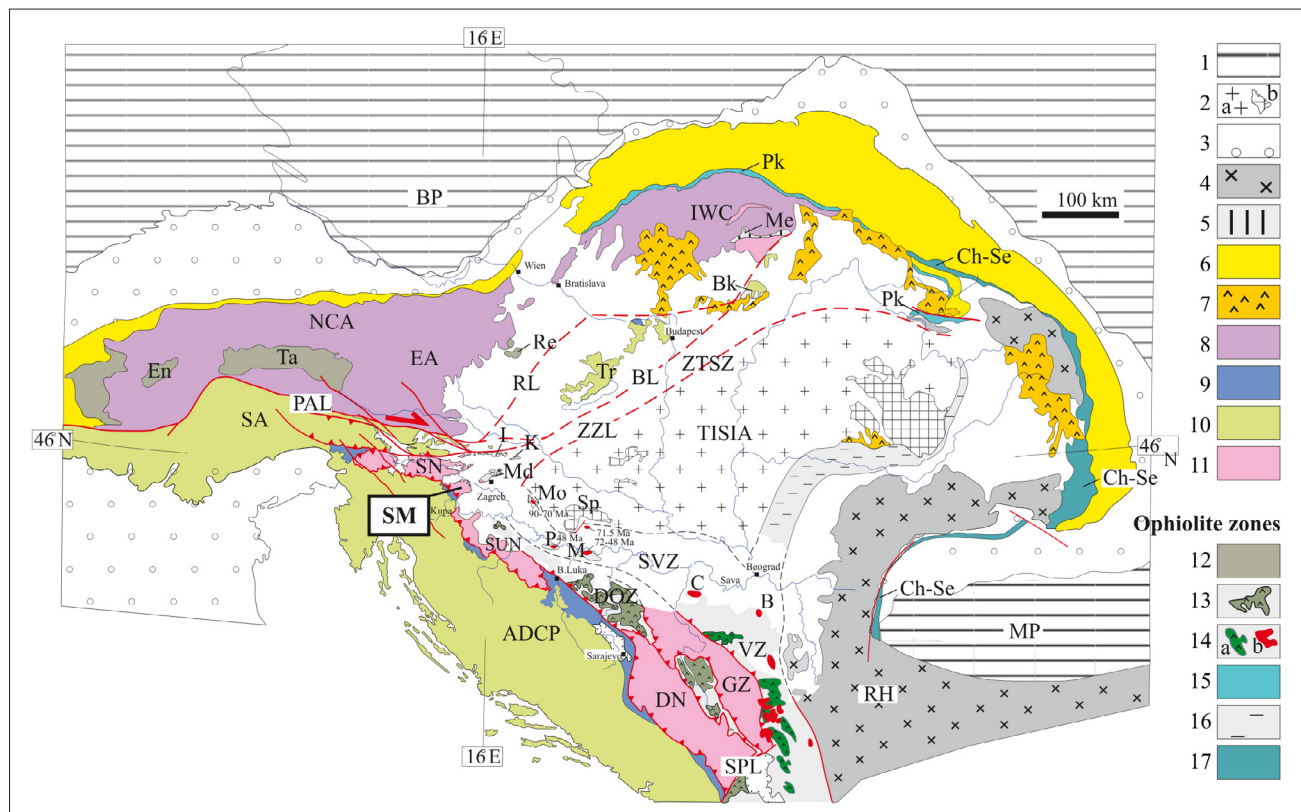


Figure 1: Descriptive map of regional tectonic units and zones in the Alpine-Dinaridic Carpathian orogen and Pannonian basin system (on the basis of data of [Aubouin et al., 1970](#); [Csontos et al., 1992](#); [Pamić, 1993](#); [Pamić et al., 1998](#); [Willingshofer, 2000](#)). Abbreviations: Tectonic Units 1) Eurasian foreland (BP Bohemian promontory; MP Moesian platform); 2) Tisia units: a) beneath Neogene cover; b) on the surface; 3) Alpine-Carpathian Molasse belt; 4) Rhodope units (RH); 5) The Meliata units (Me); 6) Alpine-Carpathian flysch belt; 7) Neogene volcanites of Pannonian basin system; 8) Austroalpine units (NCA Northern Calcareous Alps; EA Eastern Alps, IWC); 9) Slope and basin sequences of eastern margin of ADCP (Bosnian flysch, flysch of Slovenian trough); 10) Units of Southern Alps (SA) and Adriatic-Dinaridic carbonate platform (ADCP); 11) The nappes of Paleozoic-Triassic sequences: GZ Golija zone; DN Durmitor nappe; SUN Sana-Una nappe; SN Sava nappe); 12) Penninic units (En Engadine; Ta Tauern; Re Rechnitz); 13) Units of Dinaridic ophiolite zone (DOZ) with ophiolitic massifs; 14) Units of Varadar (VZ) and Sava-Vardar zone (SVZ) with a) ophiolitic massifs and b) granodioritic intrusives; 15) The zone of Penninic nappes (Pk); 16) Units of Southern Apuseni and Eastern Vardar; 17) Units of Cehla-Severin (Ch-Se); Faults (PAL Periadriatic lineament; RL Raba lineament; BL Balaton lineament; ZZL Zagreb-Zemplin lineament; ZTSZ Zagorje Mid-transdanubian shear zone; SPL Skadar-Peć lineament; Mountains (Bk Bukk Mt.; Tr Transdanubian mountains; I Ivanščica Mt.; K Kalnik Mt.; Md Medvednica Mt.; S-M Samobor mountains; Mo Moslavačka gora Mt.; Sp Slavonian mountains; P Prosara Mt.; M Motajica Mt.; C Cer Mt., B Bukulja Mt.). Modified after [Tomljenović, \(2002\)](#).

ore deposit might be declared as a prototype of the Permian siderite-polysulphide-barite deposits in the western Tethyan realm.

The aim of this paper is to make detailed petrographic and geochemical analyses on 6 representative samples of the Permian clastic rocks from the St. Barbara ore mine in Rude, in order to determine the provenance, source rock weathering degree and the influence of hydrothermal alterations on investigated source rocks, as well as the geotectonic position of the sedimentation basin.

1.1. Geology of terrain

The Samobor Mountains are located in the contact of the three different tectonically influenced areas, that of Alpine, Dinaric, and Pannonian. Its tectonics are very complicated, and the present faults are characterized by

different directions, intensity and age. In the structural view, the Samobor Mountains are located in the most western part of the Zagorje-Midtransdanubian zone (ZMTZ) ([Tomljenović, 2002](#)), which is bordered by the Periadriatic (PAL), Balaton (BL) and the Zagreb-Zemplin (ZZL) lineament (see [Figure 1](#)).

The oldest rocks of the Samobor Mountains are Upper Carboniferous black to gray clay-schists overlain by Permian sandstones that locally contain lenses of black shale and siltstone ([Šinkovec, 1971](#); [Šikić et al., 1972](#)). The appearance of conglomerates, limestones, anhydrite, and gypsum in the upper part of the Permian sediment layer indicate the shallowing processes of the sedimentary basin ([Herak, 1956](#)). Permian deposits are unconformably overlain by Triassic clastic-carbonate rocks, sandstone, siltstone, shale, limestone, dolomite and chert. Rocks of Jurassic age are poorly represented

and consist of limestones, subordinate dolomites, limestone breccia, cherts and silicified limestones (Šikić et al., 1972). Cretaceous rocks are characterized by the appearance of greenish greywacke sandstones, shales, radiolarian cherts and flysch (Šikić et al., 1972). Diabase, spilite and subordinate basalt appear within an ophiolite complex whose stratigraphic affinity is not yet clearly defined (Middle Triassic-Upper Jurassic, Lower Cretaceous). Paleocene rocks mainly consist of coloured marls, siltite and subgreywacke sandstones. Neogene sediments are composed of shallow marine clastite, siltite, marl, calcarenite, calcrudite, ridge forming limestone, clays, and clastite with interbedded coal layers. The youngest rocks of this area are Quaternary gravels, sands and clays (Šikić et al., 1972). Ore mineralization in the Rude is located within the Upper Palaeozoic sediments (see Figure 2).

According to Šinkovec (1971), dark gray schists of the Upper Carboniferous prevailed in lower part of the Upper Palaeozoic sediments, and Permian sandstones, containing lenses and layers of black shale, conglomerates, and dolomites constitute its upper part. In the upper part of the sandstone series, there is an 8 m thick siderite layer, followed upward by a 5 m thick sandstone layer, which is overlain by the main mass of anhydrite and gypsum. The anhydrite thickness is proven to be at least 45 m. Above the anhydrite and gypsum stratum occur either sandstones or Verfenian clastic sediments (Šinkovec, 1971). Ore-rich sulfide veins are situated below the main mass of the siderite layer.

Šinkovec believed that the mineral deposit in Rude correspond to the exhalation-sedimentation type of ore, where the hydrothermal activity took place in three phases and resulted in: a) the formation of the main mass of siderite, part of quartz and pyrite; b) the formation of the largest part of the pyrite, and c) the formation of vein type mineralization in the scope of which crystallized most sulfide minerals, part of siderite and quartz, and barite in the end. In addition, he thought that iron in the smaller ore bodies that were far away from the siderite body precipitated as hematite. He also pointed out that part of the siderite precipitated during the transition of hydrothermal fluids through the upper parts of still unconsolidated sands. Consequently, the matrix of sandstones situated immediately below the siderite body consists mainly of siderite.

Palinkaš et al. (2010) concluded in their research that the ore deposit in Rude is hosted by Permian non-metamorphosed siliciclastic sediments and evaporites, and consists of stratiform hematite-barite ore, stratabound vein siderite-polysulfide-barite-quartz mineralization and late stage galenite-barite veins. The authors believe that this ore deposit belongs to the SEDEX (sedimentary exhalative) hydrothermal deposit which has been formed by circulation of hydrothermal solutions caused by rift magmatism in the Upper Permian. According to the authors, the ore deposit in Rude represents *locus typicus* of

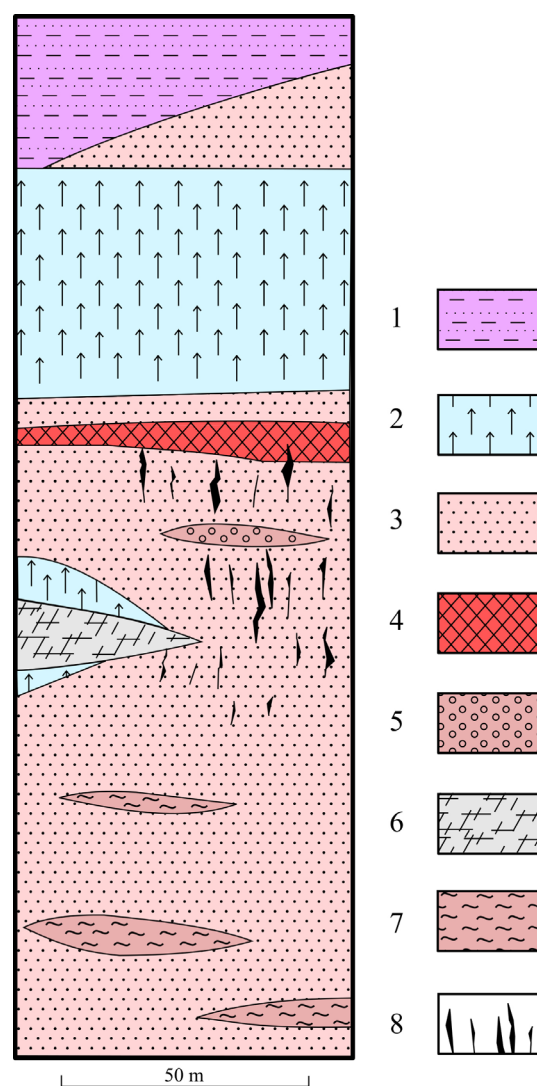


Figure 2: Geologic column of ore deposition area (Šinkovec, 1971). 1. Lower Triassic clastic sediments, 2. Anhydrite and Gypsum, 3. Sandstone, 4. Siderite, 5. Conglomerate, 6. Dolomite, 7. Shale, 8. Ore veins.

the Permian siderite-barite-polysulphide deposits in the western Tethyan realm. However, it should be emphasized that there are no traces of magmatism neither in the mine itself nor in the area of the Samobor Mountains at the time of the formation of ore deposits in Rude.

2. Analytical methods and sampling

Detailed petrographic and geochemical analyses were made on the 6 representative samples from different locations in the mine (see Figure 3). Samples RK-1 and RK-2 were collected in the Kokel pit located at 363 m above sea level. Sample RK-1 was taken near the entrance to the pit, and RK-2 closer to the siderite ore body. Samples RK-3 and RK-5 were sampled in the main excavation chamber of the siderite ore body, and the samples RT-1 and RT-2 were taken in the St. Trojstvo pit located at 350 m above sea level. Sample RT-1 was col-

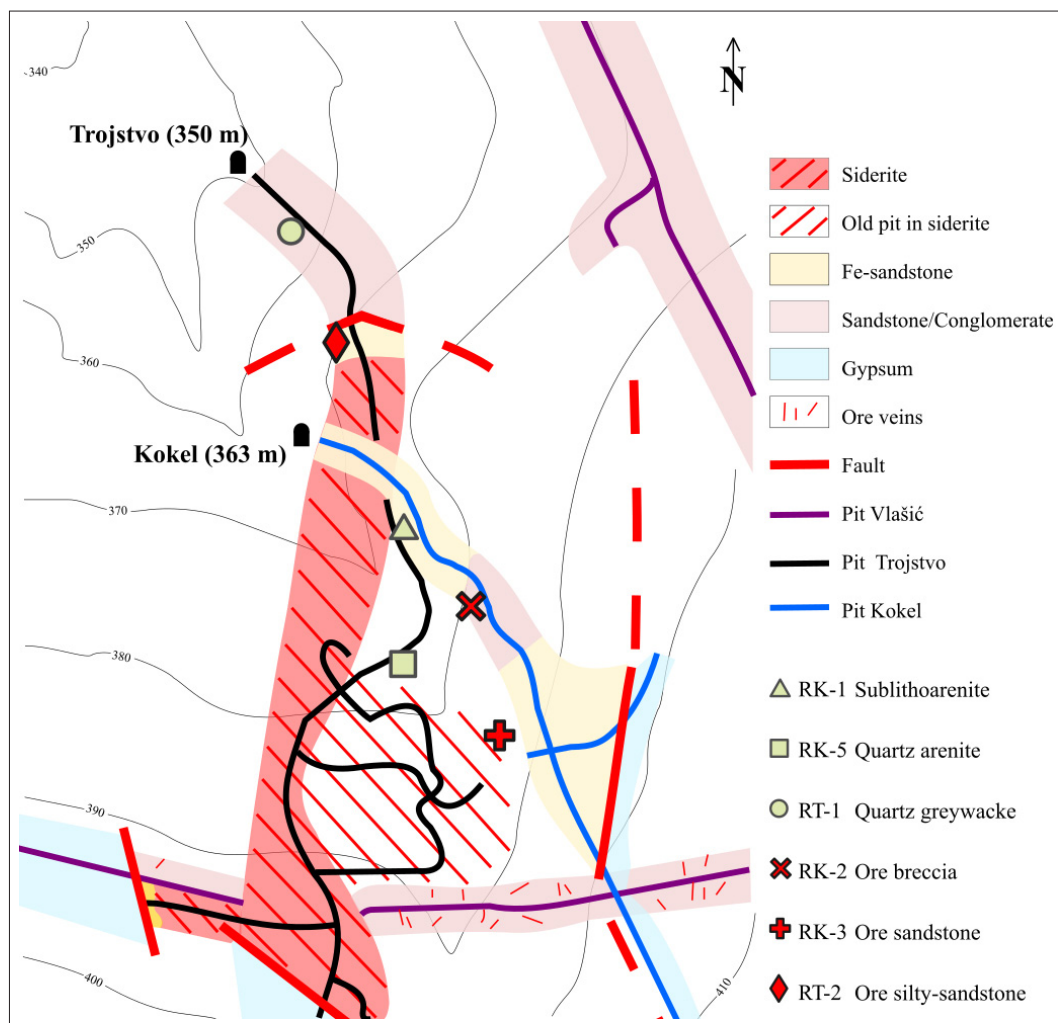


Figure 3: Locations of collected samples. Modified after Šinkovec (1954).

lected at the pit entrance, and sample RT-2 closer to the former siderite ore body.

The polarization microscope LEITZ LABORLUX 11 POL was used for the petrographic analysis, and the microscopic photographs were taken using the LEICA MICROSYSYSTEMS 020-522 101 DM/LSP polarization microscope in the Institute of Mineralogy, Petrology and Mineral Resources at the Faculty of Mining Geology and Petroleum Engineering, University of Zagreb. All chemical analyses were made in the ACME analytical laboratories Vancouver Ltd. in Canada. Concentrations of the elements were obtained by inductively coupled plasma emission spectrometry (ICP-ES) and trace elements by inductively coupled plasma mass spectrometry (ICP-MS).

3. Results

3.1. Petrographic analysis

The RK-1 sample consists predominantly of quartz, followed by small amounts of lithic fragments and mus-

covite (see **Figure 4**). Feldspar was not detected. Quartz occurs in the form of monocrystalline and polycrystalline grains having irregular and sutured boundaries which are typical for the quartz of metamorphic origin. All quartz grains show undulose extinction. Some grains also contain fluid inclusions, having linear to sublinear alignment. Lithic fragments are dominated by chert, quartzite, and quartz-muscovite schist. Larger muscovite sheets are bent, and often show undulose extinction. The heavy mineral assemblage is characterized by tourmaline, zircon, and opaque minerals. Mineral grains are well sorted and their dimensions vary from 0.07 to 0.35 mm. The grains are held together by barite and subordinatedly siderite cement (see **Figure 4**). Quartz contact with barite cement reveals dissolution effects, and fibrous quartz has also been detected. According to the classification of **Pettijohn et al. (1987)** the sample is classified as **sublithoarenite**. The mineral composition indicates a high degree of maturity.

The RK-2 sample contains detrital particles of quartz, lithic fragments, siderite, and mica. Feldspar was not detected. Quartz is present in the form of monocrys-

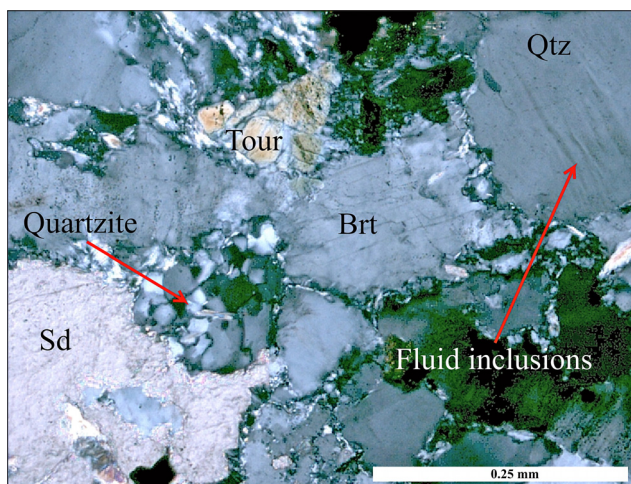


Figure 4: Microscopic photograph of RK-1 sublithoarenite (+ N). Fluid inclusions in the quartz have subparallel orientation. Brt = barite, Qtz = quartz, Sd = siderite, Tour = tourmaline.

talline and polycrystalline grains with irregular lobate boundaries, showing undulose extinction. Some grains contain fluid inclusions. Siltstone and quartzite are the dominant lithic fragments (see **Figure 5**), but pelite and sandstone fragments, although rare, are also found. Siderite generally appears as a grain, and rarely as a cement. Mica mineral group is represented by muscovite and biotite. There is no grain support in the structure and the grain size has a wide distribution ranging from 0.04 to 6.0 mm. The detrital components of this clastic rock are cemented by hematite causing the red macroscopic color of the sample. Rarely, hematite also appears as a clast. The rock is classified as an **ore breccia**.

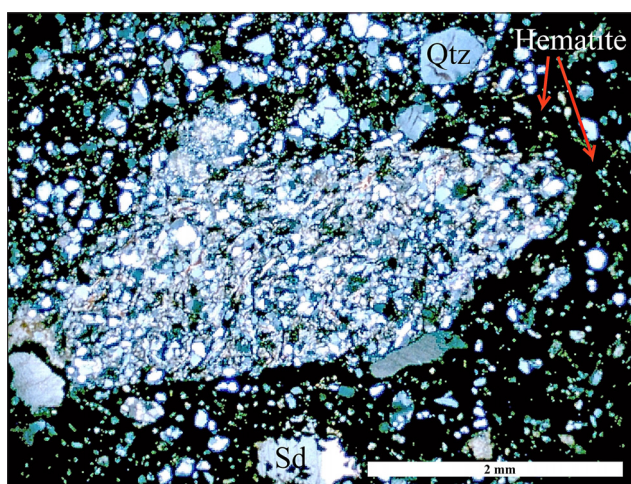


Figure 5: Microscopic photograph of the RK-2 ore breccia (+ N). A fragment of siltite in hematite cement. Hem = hematite, Qtz = quartz, Sd = siderite.

In the **RK-3** sample only rare monocrystalline and polycrystalline angular clasts of quartz can be clearly detected, usually in the range 0.05 to 1.25 mm. In the

close vicinity of rock fissures, quartz also occur in association with barite, pointing to its possible chemical origin. There is no support between clasts and they are bonded with cement, which is volumetrically dominant in this sample. The cement is made of hematite, siderite, and barite. In some places, colloidal band structure of siderite cement is visible (see **Figure 6**). Due to the intense hydrothermal alteration, the sandstone is not classified according to classification of **Pettijohn et al. (1987)**, but is simply named as an **ore sandstone**.

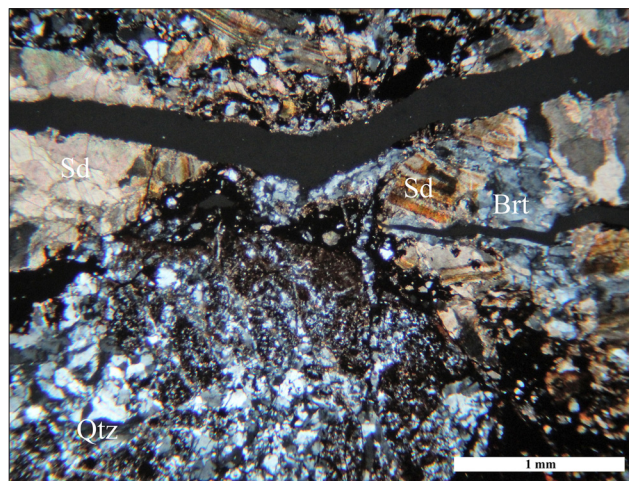


Figure 6: Microscopic photograph of RK-3 ore sandstone (+ N). Colloidal siderite band and barite found in the veins crosscutting the sandstone. Brt = barite, Sd = siderite, Qtz = quartz

Sample RK-5 mainly contains monocrystalline and polycrystalline quartz grains and a smaller amount of lithic fragments and muscovite (see **Figure 7**). Feldspar was not detected. Quartz grains show undulose extinction. The boundaries between the polycrystalline grains are irregular, mosaic, with structures that indicate the pressure dissolution or recrystallization by the mechanism of either the grain boundary migration or the domain rotation. Some grains also contain fluid inclusions. Detrital quartz grain shows untypical narrow, densely subparallel arranged deformation lamellae (see **Figure 8**). They have been considered as possible shock metamorphic phenomena (planar deformation features PDFs) related to meteorite impact at the Permian-Triassic border (**Palinkaš et al., 2010**), but such lamellae in quartz could be also tectonically induced (**Vernooij and Langenhorst, 2005**). The only lithic fragment is quartzite. The grain dimensions vary from 0.02 to 2.00 mm. Clasts are embedded in fine grained quartz material without grain support. In some places rare quartz-sericite matrix occurs, which is most likely a product of the clay matrix recrystallization. It is possible that a considerable part of the finely grained quartz was formed chemically. Siderite cement appears in a negligible amount. According to the classification of **Pettijohn et al. (1987)**, the sample was classified as **quartz arenite**. Due to its mineral

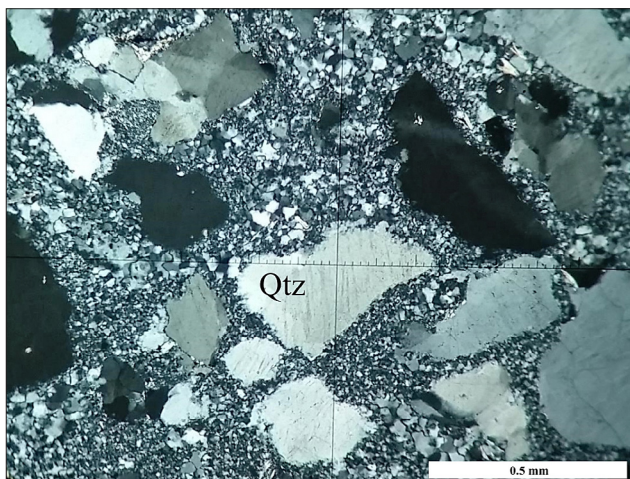


Figure 7: Microscopic photograph of the RK-5 quartz arenite (+ N). Poorly sorted quartz clasts in the finely grained quartz material, which could be formed chemically. Qtz = quartz.

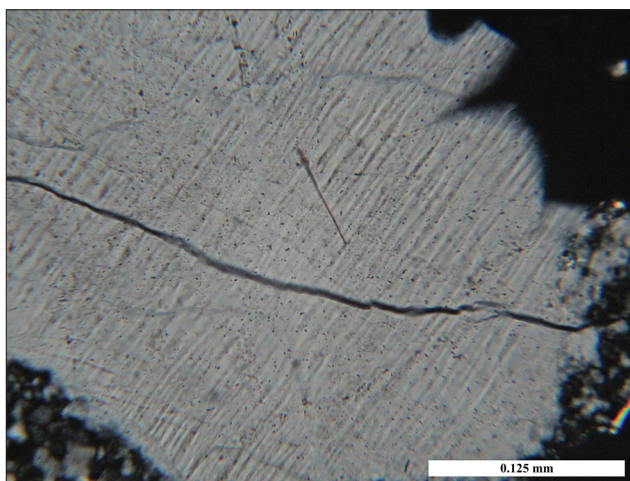


Figure 8: Microscopic photograph of densely subparallel arranged deformation lamellae (PDFs?) decorated by fluid and mineral inclusions in quartz clast of the RK-5 quartz arenite (+ N).

composition, sandstone indicates a high degree of maturity, it is still characterized by very poorly sorted angular clasts, indicating short transport.

The **RT-1 sample** consists dominantly of monocrystalline and polycrystalline quartz grains and small amount of lithic fragments and micas (see **Figure 9**). Feldspar was not detected. Quartz grain, whose dimensions vary from 0.05 to 1.25 mm, have undulose extinction. Many of them contain untypical narrow, densely, subparallel arranged deformation lamellae most often decorated by fluid or mineral inclusions. Rare lithic fragments are represented by quartzite and quartz-muscovite schist. Muscovite is the dominant phase in mica minerals and shows undulose extinction or is bent. Heavy mineral assemblage consists of tourmaline, zircon and opaque minerals. The clasts generally have grain support and the primary clay matrix is recrystallized into quartz-sericite matrix. In some places, there is a siderite cement.

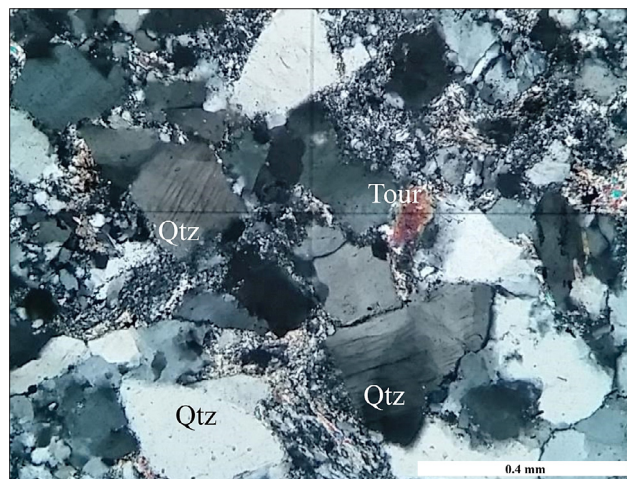


Figure 9: Microscopic photograph of RT-1 quartz greywacke (+ N). Well sorted clasts with grain support are held together by a quartz-sericite matrix and, in some cases, by the siderite cement. Qtz = Quartz, Tour = tourmaline.

According to the classification of **Pettijohn et al. (1987)** the sample was classified as **quartz greywacke**. The sandstone is characterized by relatively good sorting of poorly rounded quartz-dominated clasts.

The **RT-2 sample** contains monocrystalline quartz grains that prevail over polycrystalline quartz and subordinate muscovite (see **Figure 10**). Lithic fragments and feldspar were not observed. Quartz has undulose extinction and rarely contains untypical narrow, densely subparallel arranged deformation lamellae and fluid inclusions. Most of clasts are without grain support and are held together by siderite cement that has been locally shifted to hematite. The larger siderite grains show deformations in the form of undulose extinction. In the small veinlets, crosscutting the sample, quartz, siderite and euhedral pyrite have crystallized. The size of clasts varies from 0.05 to 0.50 mm. Considering that the sam-

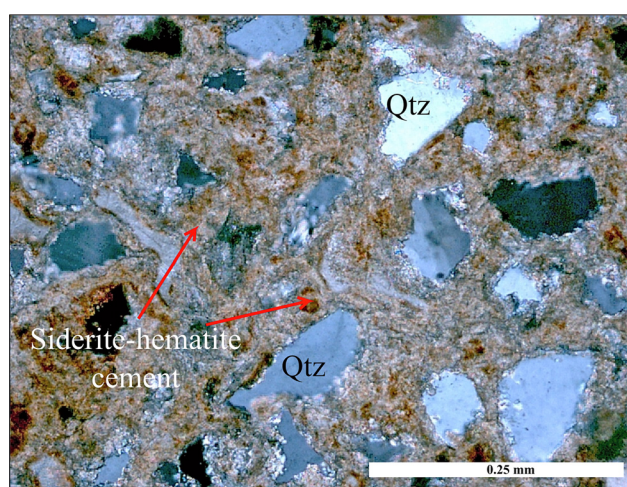


Figure 10: Microscopic photograph of RT-2 ore silt sandstone (+ N). The sandstone is cemented by siderite, which oxidizes into hematite cement. Qtz = quartz.

ple consists of sand, as well as silt particles this rock has been named as **ore silty sandstone**, without using a classical classification of **Pettijohn et al. (1987)**. Poorly rounded and poorly sorted quartz grains indicate a short transport distance.

3.2. Chemical analysis

Chemical analysis of the major element oxides, expressed in weight percentages, are shown in **Table 1**. Compared to the average composition of the upper continental crust (UCC), determined by Taylor and McLennan (1985), major element oxides in most of the studied samples are depleted. Still, SiO₂ concentrations are an exception in RK-5 quartz arenite (96.35 %) and RT-1 quartz greywacke (80.67 %). As can be expected, in the vicinity of Fe-ore deposits, Fe₂O₃ concentrations were increased in relation to the upper continental crust (UCC) in RK-1 sublithoarenite (6.31 %), RK-2 ore breccia (38.12 %), RK-3 ore sandstone (48.25 %) and RT-2 ore silty sandstone (38.54 %). The content of MgO ranges from 0.10 to 4.26 %, and MnO from 0.02 to 1.39 %. There is a clear positive correlation observed between the amount of siderite and MgO and MnO concentrations in the samples, which can be explained by the substitution of Mg²⁺ and Mn²⁺ for Fe²⁺ in the siderite crystalline structure. Very low concentrations of CaO (0.01-0.60 %) and Na₂O (0.01 to 0.10 %) in all samples are consistent with petrographic analysis in which neither plagioclase nor calcite was observed. A strong positive correlation show Al₂O₃ (0.87-8.01 %), TiO₂ (0.08-0.50 %)

and K₂O (0.05-1.72 %) concentrations, pointing to the association of these oxides in phyllosilicates. The highest amounts of Al₂O₃, TiO₂, and K₂O are found in RT-1 quartz greywacke, the sample in which, as petrographic analysis revealed, the micas are the most widespread.

Table 2 shows trace element data expressed in ppm. It is evident that analysed sediments show trace element concentrations, mostly lower than the average composition of the upper crust (see **Figures 11** and **12**). The exceptions are Cs, which has slightly elevated concentrations in RK-2 ore breccia (27.0 ppm) and RT-1 quartz greywacke (5.6 ppm), Ba with elevated concentrations in all samples except RK-5 quartz arenite (337.0 ppm), Sr elevated in RK-1 sublithoarenite and RK-3 ore sandstone (5810.0 and 4280.0 ppm), and Ta slightly elevated in RK-1 sublithoarenite (6.3 ppm). Slightly elevated concentrations of Cs in the RK-2 ore breccia and RT-1 quartz greywacke can be linked to the present phyllosilicates. Elevated concentrations of Ba and Sr are positively correlated with the occurrence and amount of barite in the samples. Increased concentration of Ta in the RK-1 sublithoarenite could be related to mineral zircon, tourmaline and/or phyllosilicates present in this sample in a larger quantity than in the others.

Rare earth element concentrations are shown in **Table 3** and normalized to chondrite (**Sun and McDonough, 1989**) in **Figures 13** and **14**. The enrichment of light REEs in relation to the heavy REEs is visible in all samples with (La/Yb)_N ratios varying between 1.84 and 11.78. Two groups of samples are clearly distinguished. RK-1 sublithoarenite, RK-3 ore sandstone, and RT-2 ore silty sand-

Table 1: Chemical analyses of main elements (weight %)

Sample	RK-1 Sublitho- arenite	RK-2 Ore breccia	RK-3 Ore sandstone	RK-5 Quartz arenite	RT-1 Quartz greywacke	RT-2 Ore silty- sandstone	UCC Taylor and McLennan (1985)
SiO ₂	38.39	45.87	28.10	96.35	80.67	31.41	66.00
Al ₂ O ₃	2.63	6.70	1.05	1.22	8.01	0.87	15.20
Fe ₂ O ₃	6.31	38.12	48.25	0.70	3.87	38.54	5.03
MgO	0.79	0.87	2.19	0.10	0.62	4.26	2.20
CaO	0.06	0.20	0.42	0.01	0.09	0.60	4.20
Na ₂ O	0.10	0.10	0.01	0.02	0.10	0.02	3.90
K ₂ O	0.54	1.57	0.05	0.25	1.72	0.18	3.40
TiO ₂	0.15	0.48	0.15	0.08	0.50	0.22	0.68
P ₂ O ₅	0.04	0.03	0.04	<0.01	0.05	0.02	0.15
MnO	0.28	0.15	0.66	0.02	0.14	1.39	0.08
Cr ₂ O ₃	0.01	0.01	0.00	<0.00	0.00	0.00	
Na ₂ O/K ₂ O	0.19	0.06	0.20	0.08	0.06	0.11	
K ₂ O/Na ₂ O	5.40	15.70	5.00	12.50	17.20	9.00	
Fe ₂ O ₃ /MgO	7.99	43.82	22.03	7.00	6.24	9.05	
Al ₂ O ₃ /SiO ₂	0.07	0.15	0.04	0.01	0.10	0.03	
LOI	4.50	5.60	10.60	1.20	4.00	22.10	
Σ	53.83	99.70	91.55	99.96	99.81	99.57	
CIA	79.00	78.20	68.60	81.30	80.70	52.10	

Table 2: Trace element concentrations (ppm).

Sample	RK-1	RK-2	RK-3	RK-5	RT-1	RT-2	UCC
	Sublitho-arenite	Ore breccia	Ore sandstone	Quartz arenite	Quartz greywacke	Ore silty sandstone	McLennon (2001)
Ba	>50000.0	1510.0	>50000.0	337.0	1115.0	2043.0	550.0
Be	<1.0	2.0	2.0	<1.0	2.0	1.0	3.0
Co	19.6	1.1	1.7	<0.2	10.7	6.0	17
Cs	2.4	27.0	1.5	1.6	5.6	0.8	4.6
Ga	2.5	12.4	1.8	4.3	10.3	3.7	17
Hf	4.0	4.7	2.4	0.7	4.3	2.6	5.8
Nb	3.0	7.5	2.7	1.3	7.1	3.3	12.0
Rb	23.6	82.3	2.5	11.0	64.9	7.0	112.0
Sn	<1.0	3.0	<1.0	<1.0	2.0	<1.0	5.5
Sr	5810.0	56.7	4280.0	11.5	127.8	82.1	350.0
Ta	6.3	0.6	1.0	0.1	0.7	0.3	1.0
Sc	1	6	1	<1	5	2	13.6
Th	2.4	7.7	1.6	1.4	7.8	3.0	10.7
U	0.9	2.2	0.5	0.5	1.7	0.7	2.8
V	13.0	72.0	25.0	<8.0	29.0	21.0	107
W	2.1	2.3	7.7	0.6	1.3	0.7	2.0
Zr	77.1	160.4	67.8	21.1	142.1	94.0	190.0
Y	5.5	14.8	5.0	3.1	10.8	6.2	22.0
Mo	0.3	0.2	0.1	0.1	<0.1	0.2	1.5
Cu	6.0	0.7	0.4	0.8	6.5	21.8	25
Pb	22.0	54.3	17.4	0.4	9.1	8.0	17.0
Zn	4.0	21.0	66.0	<1.0	5.0	488.0	71
Ni	7.1	2.6	7.6	0.3	18.6	9.8	44
As	103.5	4.7	6.5	<0.5	17.6	9.7	1.5
Cd	<0.1	<0.1	<0.1	<0.1	<0.1	0.1	98
Sb	5.1	34.6	16.1	<0.1	0.3	1.8	0.2
Bi	0.2	<0.1	<0.1	<0.1	<0.1	<0.1	127
Ag	0.9	<0.1	<0.1	<0.1	0.3	<0.1	50
Au (ppb)	1.1	<0.5	<0.5	<0.5	<0.5	<0.5	
Hg	1.4	0.3	0.4	0.4	3.1	4.1	
Tl	<0.1	<0.1	<0.1	<0.1	0.2	<0.1	750
Se	<0.5	<0.5	<0.5	<0.5	<0.5	<0.5	50

stone show positive Eu-anomalies (2.3; 3.8 and 4.5) and lower concentrations of light rare earths (see **Figure 13**), while RK-2 ore breccia, RK-5 quartz arenite, and RT-1 quartz graywacke (see **Figure 14**) show a negative Eu-anomaly (0.1, 0.6 and 0.4) and are characterized by a higher total REE (63.51, 23.79 and 98.51). Eu anomaly was calculated as $Eu/Eu^* = Eu_N / \sqrt{[(Sm_N) * (Gd_N)]}$.

4. Discussion

4.1. Rock classification

The chemical rock classification of studied samples based on the logarithmic ratios of the major elements Fe_2O_3/K_2O and SiO_2/Al_2O_3 (**Herron, 1998**), partly correlates with petrographic analyses (see **Figure 15**). The samples RT-1 and RK-5 petrographically determined as

quartz greywacke and quartz arenite are projected into the fields of lithic and quartz arenites, respectively. The other studied samples are plotted into the area of iron sandstone. Petrographic analyses have revealed that some samples after deposition were exposed to hydrothermal fluids rich in Fe, Ba and Si and have undergone significant chemical changes. This explains the partial incompatibility of petrographic and chemical classifications.

4.2. Provenance

The lack of feldspar, the rare presence of lithic fragments, and the dominant presence of quartz point to the felsic or quartz sedimentary source rock. Quartz in all samples has undulose extinction and, moreover, shows deformations and contains many inclusions, so a volcanic origin of the rocks is unlikely. It is more likely that

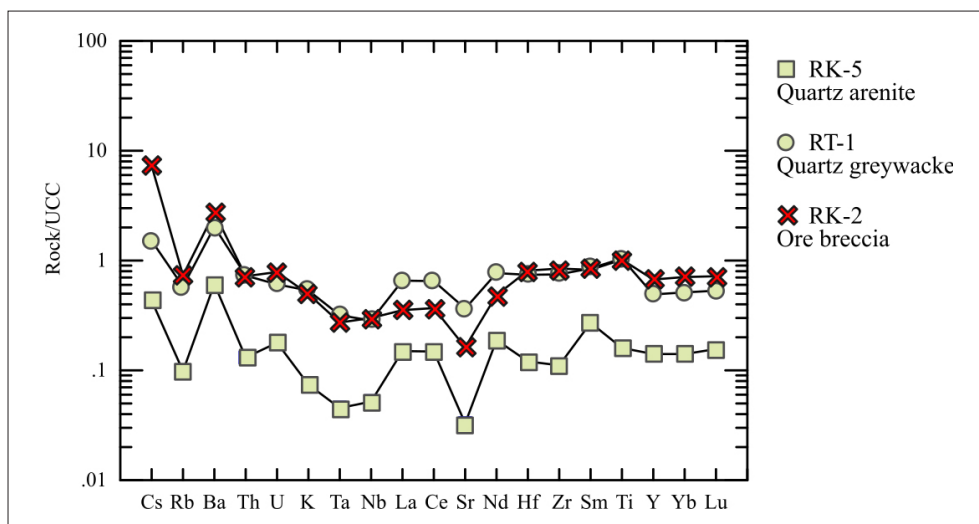


Figure 11: Trace element concentrations of samples RK-2, RK-5 and RT-1 normalised on UCC (Taylor and McLennan, 1985)

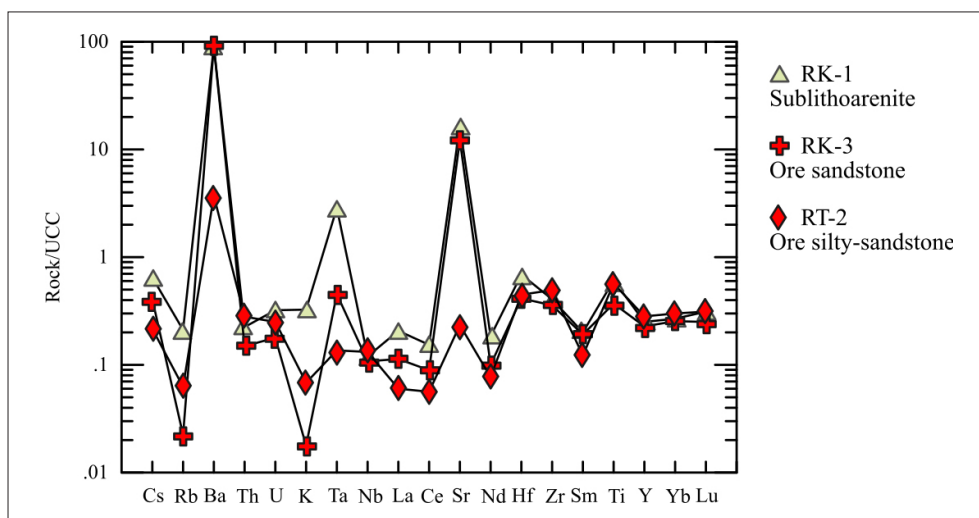


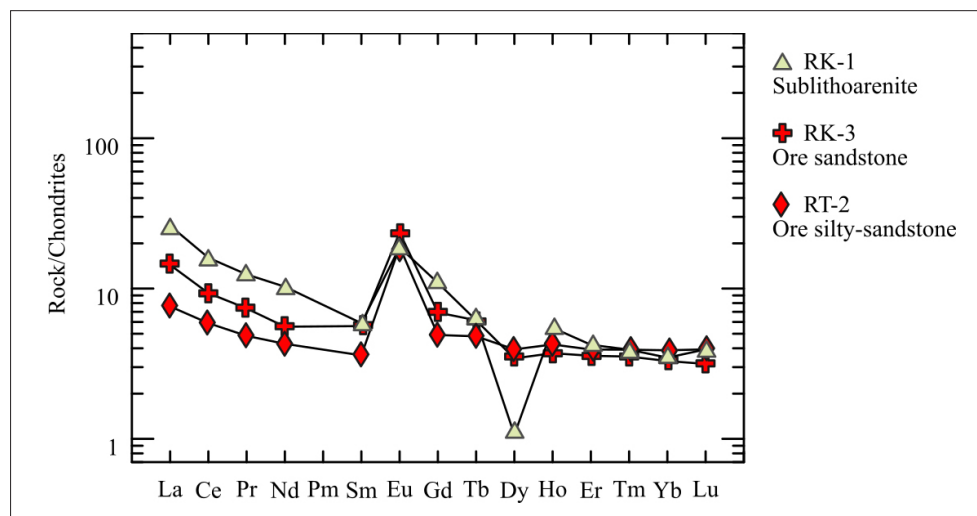
Figure 12: Trace element concentrations of samples RK-1, RK-3 and RT-2 normalised on UCC (Taylor and McLennan, 1985)

the studied sandstones were formed by the decomposition of acid intrusive or even metamorphic rocks, which can be concluded from a very common occurrence of polycrystalline quartz grains. In the discrimination diagram (Roser and Korsch, 1988) in Figure 16, the least hydrothermal modified RT-1 quartz greywacke, RK-5 quartz arenite and the RK-1 sublithoarenite are projected into the quartz sedimentary region. Other samples are located in a field of mafic igneous origin, which, of course, is not a real picture, but rather the result of the influence of iron-rich hydrothermal fluids that have secondarily modified sandstone. Due to the fact that the discriminant variables D1 and D2 are based on contents of major oxides (Al_2O_3 , TiO_2 , Fe_2O_3 , MgO , CaO , Na_2O and K_2O), which are mobile during weathering and alteration, the ratios of certain trace elements with lower mobility characteristics are used additionally for determina-

tion of source rocks. It is well known that the highly incompatible nature of REEs, Th, Zr and Hf during the igneous melting and fractionation processes causes the enrichment of these elements in felsic rocks. More compatible elements such as Sc, Co, Cr and Ni are typical for mafic and ultramafic rock. Therefore, La/Sc, Th/Sc, La/Co, Th/Co, Cr/Th and Th/U ratios of siliciclastic rocks are very good provenance indicators (Cullers and Berndsen, 1998). An assumption of felsic source of studied rocks is supported by the analyzed values of these ratios in Table 4. For instance, La/Sc and Th/Sc ratios of all investigated samples are in range between 0.9-6.2 and 1.3-2.4, respectively, which corresponds to felsic rocks. Additionally, in all samples except for strongly hydrothermally altered RK-2 ore breccia and RT-2 ore silty sandstone, La/Sc ratios are higher than those of the average upper continental crust determined by McLennan

Table 3: Rare earth element concentrations (ppm).

Sample	RK-1 Sublitho- arenite	RK-2 Ore breccia	RK-3 Ore sandstone	RK-5 Quartz arenite	RT-1 Quartz greywacke	RT-2 Ore silty sandstone	UCC McLennan (2001)
La	6.20	10.60	3.40	4.50	19.70	1.80	30.00
Ce	9.80	23.60	5.70	9.50	41.60	3.60	64.00
Pr	1.18	2.86	0.70	1.19	5.07	0.46	7.10
Nd	4.80	12.60	2.60	4.90	20.00	2.00	26.0
Sm	0.90	3.71	0.86	1.22	3.82	0.55	4.50
Eu	1.09	0.08	1.37	0.17	0.38	1.10	0.88
Gd	2.24	2.95	1.42	0.73	2.75	1.01	3.80
Tb	0.23	0.48	0.23	0.10	0.38	0.18	0.64
Dy	0.27	2.55	0.87	0.65	1.90	1.00	3.50
Ho	0.31	0.55	0.21	0.12	0.37	0.24	0.80
Er	0.70	1.51	0.59	0.29	1.07	0.65	2.30
Tm	0.10	0.23	0.09	0.06	0.17	0.10	0.33
Yb	0.59	1.56	0.56	0.31	1.13	0.66	2.20
Lu	0.10	0.23	0.08	0.05	0.17	0.10	0.32
∑ REE	28.51	63.51	18.68	23.79	98.51	13.45	146.37
Eu/Eu*	2.30	0.10	3.80	0.60	0.40	4.50	0.40-0.94
(La/Yb)_N	7.10	4.59	4.10	9.81	11.78	1.84	
(La/Sm)_N	4.34	1.80	2.49	2.32	3.25	2.06	
(Gd/Yb)_N	3.08	1.53	2.06	1.91	1.97	1.24	

**Figure 13:** The chondrite normalized (Sun and McDonough, 1989) REE patterns of samples RK-1, RK-3 and RT-2

nan (2001). The Th/Sc ratios are in all studied samples higher than in the average upper continental crust.

McLennan et al. (1993) showed that in most upper crustal rocks the Th/U ratio usually varies between 3.5 and 4.0. The Th/U ratio in sedimentary rocks higher than 4.0 pointing to strong weathering in source areas or sediment recycling, due to the fact that weathering and recycling result in loss of U (Rahman and Suzuki, 2007). Th/U ratios greater than or equal to 4 indicates the acidic parent rocks and less than 4 basic source (Rahman and Suzuki, 2007). In the RT-1 quartz greywacke and RT-2

ore silty-sandstone samples Th/U ratio exceeds 4 (4.6 and 4.3), which indicates an acid source while the RK-1 sublithoarenite, RK 2 ore breccia, RK-3 ore sandstone and RK-5 quartz arenite samples have values less than 4 indicating a basic source. The REE analysis separates the samples into two groups. Samples of RK-2 ore breccia, RK-5 quartz arenite, and RT-1 quartz greywacke have up to 90 times higher REE concentrations compared to chondrites and a pronounced negative Eu anomaly. Such a trend is typical for sedimentary rocks and in general represents the composition of an upper

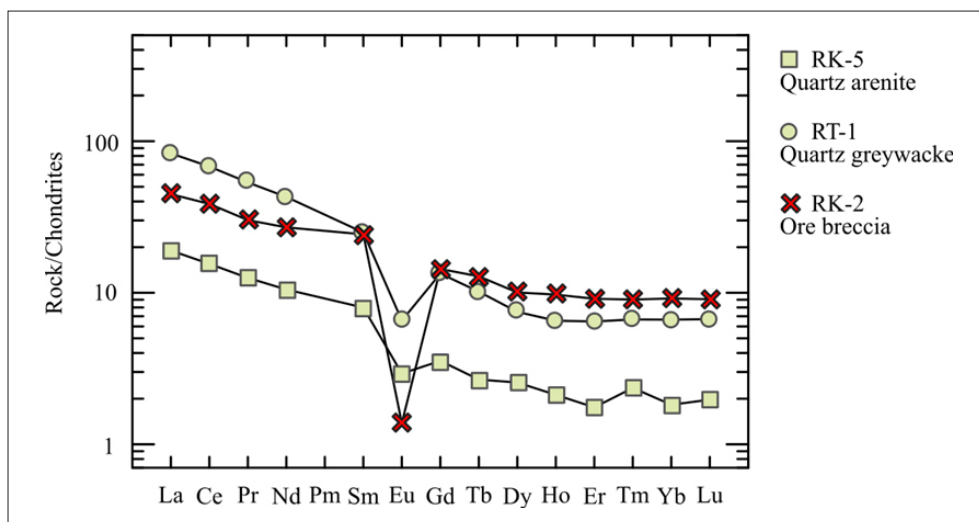


Figure 14: The chondrite normalized (Sun and McDonough, 1989) REE patterns of samples RK-2, RK-5 and RT-1

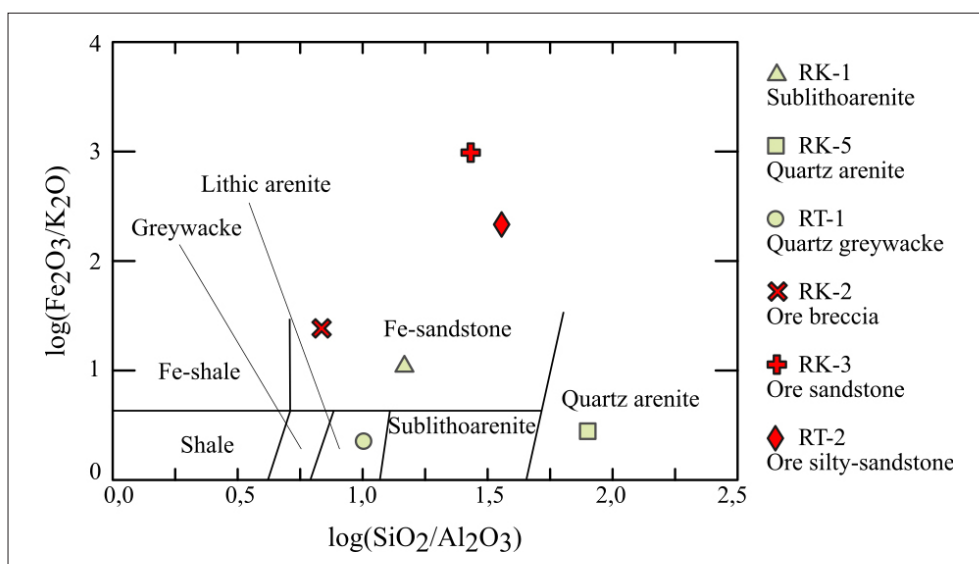


Figure 15: Chemical classification of studied sandstones based on the ratios of major elements: $\log(\text{SiO}_2/\text{Al}_2\text{O}_3)$ versus $\log(\text{Fe}_2\text{O}_3/\text{K}_2\text{O})$ (Herron, 1998)

continental crust. Samples of RK-1 sublithoarenite, RK-3 ore sandstone, and RT-2 ore silty-sandstone have a much lower concentration of REE, up to 30 times enriched relative to chondrite, and a positive Eu anomaly. This trend is most probably caused by hydrothermal fluids rich in CO_3^{2-} -ion, which mobilized all rare earth elements except Eu.

4.3. Weathering conditions

All samples except RT-2 ore silty sandstone have a relatively high Chemical Index of Alteration (CIA), being calculated as $[\text{Al}_2\text{O}_3/(\text{Al}_2\text{O}_3 + \text{CaO}^* + \text{Na}_2\text{O} + \text{K}_2\text{O})] \times 100$, where CaO^* represents CaO incorporated in the silicate fraction of the rock. The calculated CIA values vary between 52.1 and 81.3 indicating a high level

weathering of source rocks (see **Table 1**). The weathering intensity of source rocks can also be read from the A-CN-K diagram in **Figure 17**, proposed by Nesbitt and Young (1984, 1989). Most of the samples are projected on the right side of diagram in the area with high Al_2O_3 ratios. This area is typical for the intense weathering of granite rock. The RT-2 ore silty sandstone is projected in the area of poorly weathered rocks of tonalitic composition, and the RK-3 ore sandstone in the area of the highly weathered gabbroic rock. However, the positions in the A-CN-K diagram of all samples that has been exposed to the appreciable hydrothermal alteration should be taken with caution.

The presence of heavy minerals tourmaline, zircon and opaque minerals in the samples RK-1 sublithoarenite and RT-1 quartz greywacke leads to the assumption

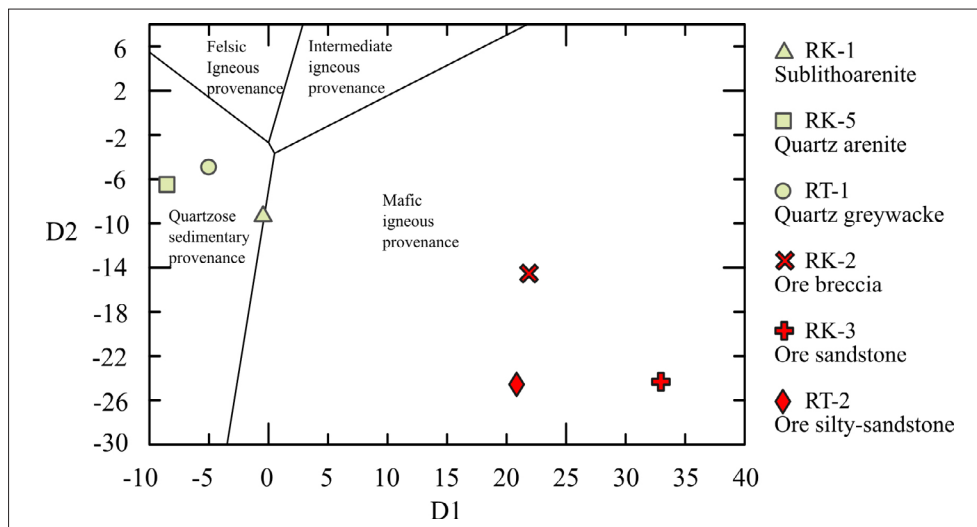


Figure 16: Provenance identification diagram using major element ratios (Roser and Korsch, 1988). $D1 = -1,773 \times TiO_2 + 0,607 \times Al_2O_3 + 0,76 \times Fe_2O_3 - 1,5 \times MgO + 0,616 \times CaO + 0,509 \times Na_2O - 1,224 \times K_2O - 9,09$. $D2 = 0,445 \times TiO_2 + 0,07 \times Al_2O_3 - 0,25 \times Fe_2O_3 - 1,142 \times MgO + 0,438 \times CaO + 1,475 \times Na_2O + 1,426 \times K_2O - 6,861$.

Table 4: Ratios of immobile elements

Sample	RK-1 Sublitho-arenite	RK-2 Ore breccia	RK-3 Ore sandstone	RK-5 Quartz arenite	RT-1 Quartz greywacke	RT-2 Ore-silty sandstone	Acid rock Cullers and Berendsen (1998)	Basic rock Cullers and Berendsen (1998)	UCC McLennon (2001)
La/Sc	6.2	1.8	3.4	>4.5	3.9	0.9	2.5-16.3	0.43-0.86	2.2
Th/Sc	2.4	1.3	1.6	>1.4	1.6	1.5	0.8-20.5	0.05-0.22	0.8
La/Co	0.3	9.6	2.0	22.5	1.8	0.3	1.8-13.8	0.14-0.38	1.8
Th/Co	0.1	7.0	0.9	7.0	0.7	0.5	0.04-3.25	0.04-1.40	0.6
Cr/Th	22.8	6.2	17.1	9.8	3.5	6.8	4.0-15.0	25-500	7.8
Th/U	2.7	3.5	3.2	2.8	4.6	4.3	>4	<4	
La/Th	2.6	1.4	2.1	3.2	2.5	0.6			
Th/Cr	0.0	0.2	0.1	0.1	0.3	0.1			

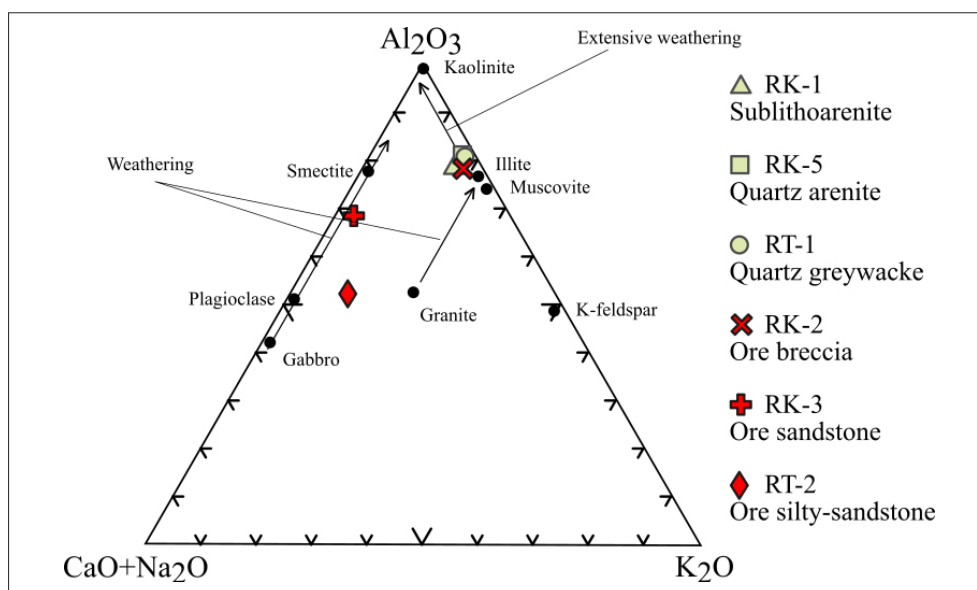


Figure 17: Evaluation of the chemical weathering trends of studied rocks in A-CN-K ternary diagram, (Nesbitt and Young, 1984, 1989)

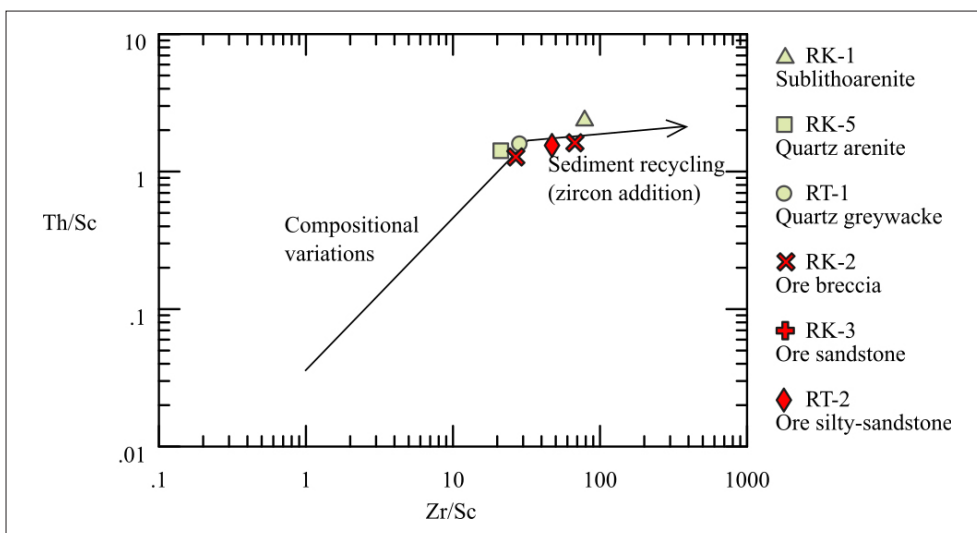


Figure 18: Th/Sc versus Zr/Sc diagram showing recycling trend of all samples (McLennan et al, 1993)

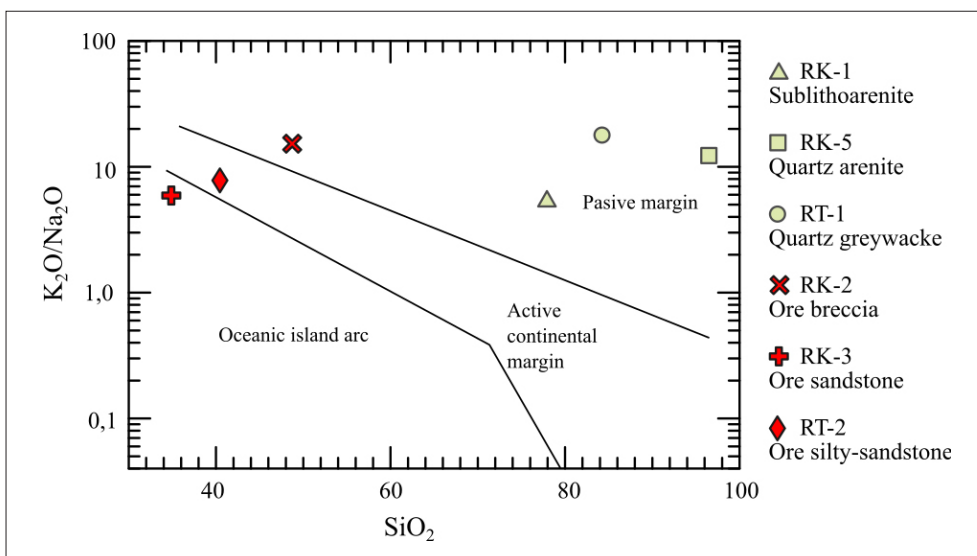


Figure 19: Geotectonic position of sedimentation basin based on the K_2O/Na_2O - SiO_2 ratio, (Roser and Korsch, 1986)

that the sediments went through extensive sorting regimes, or the possible resedimentation of hard rock. This can be also seen from the Th/Sc versus Zr/Sc diagram (McLennan et al., 1993), (Figure 18). All samples are well aligned with the sediment recycling trend.

4.4. Tectonic setting

Petrographic analysis did not identify fragments of magmatic rocks, so it can be concluded that the sedimentary basin was most likely located on the passive margin. This assumption is supported by the results of the chemical analysis, using the ratio of K_2O/Na_2O versus SiO_2 (Roser and Korsch, 1986), shown in Figure 19. The least hydrothermal modified samples RT-1 quartz greywacke and RK-5 quartz arenite, as well as

two others (RK-1 sublithoarenite, RK-2 ore breccia) are projected into the passive margin area, so it can be concluded that the examined sandstones have been formed by the weathering of continental, most likely recycled sediment material. Other samples (RK-3 ore sandstone and RT-2 ore silty sandstone) are projected in the area of ocean island arcs and active continental margin, which is not a realistic picture. The reason could be that the primary quartz-sericite matrix is suppressed by secondary siderite and hematite cement, thereby significantly reducing the SiO_2 concentration, and thus the position of the samples on the diagram moves to the left in the area of more basic rocks. The explanation lies in the fact that primary rocks were almost completely altered by secondary hydrothermal events, which have decreased SiO_2 content and enriched rocks in FeO content.

5. Conclusions

From petrographic and geochemical analyses, it can be concluded that most of the investigated sandstones are hydrothermally modified. The least modified sample RT-1, taken from the position farthest from the former ore body, is classified as quartz greywacke, the RK-5 sample as a quartz arenite, and the RK-1 sample as sublithoarenite. The samples showing pronounced hydrothermal alterations RK-2, RK-3 and RT-2 are classified as ore breccia, ore sandstone and ore silt-sandstone, respectively.

The weathering of parent rocks was very intense, CIA up to 81.3 % for most rocks. The source rocks of the investigated sandstones were felsic, most likely sedimentary and possibly re-sedimented. The sedimentary basin was probably located on a passive continental margin.

Acknowledgment

Financial resources for making this scientific work are provided by The Ministry of Science, and Education of the Republic of Croatia in the scope of scientific project: „Magmatizam i mineralna ležišta Dinarskog krškog područja“, no. 195-1953068-3206.

6. References

- Aubouin, J., Blanchet, R., Cadet, J-P., Celet, P., Charvet, J., Chorowicz, J., Cousin, M., Rampoux, J-P. (1970): Essai sur la géologie des Dinarides (*Essay on the geology of the Dinarides*). Bulletin de la Société géologique de France, 7, XII/6, 1060-1095. (*In French*)
- Bhatia, M. R. (1983): Plate tectonics and geochemical composition of sandstones. *Journal of Geology*, 91, 611-627.
- Csontos, L., Nagymarosy, A., Horváth, F., Kovác, M. (1992): Tertiary evolution of the Intra-Carpathian area: a model. *Tectonophysics*, 208, 221-241.
- Cullers, R. L., Berendsen, P. (1998): The provenance and chemical variation of sandstones associated with the Mid-Continent Rift system, USA. *European Journal of Mineralogy*, 10, 987-1002.
- Gorjanović-Kramberger, D. (1884): Palaeontološki prilozi (*Palaeontological contributions*). Rad Jugoslavenske akademije znanosti i umjetnosti, knjiga LXXII, Zagreb. (*in Croatian*)
- Hacquet, B. (1784): Oryctographia carniolica, oder physikalische Erdbeschreibung des Herzogthums Krain, Istrien und zum Theil der benachbarten Lander (*Oryctographia carniolica or physical geography of Duch Kranj, Istria and partly of adjacent countries*). III Teil. Leipzig. 184 p. (*in German*)
- Herak, M. (1956): Geologija Samoborske gore (*Geology of Samoborska Gora Mt.*). Acta geologica, 1, JAZU, Zagreb, 49-72. (*in Croatian*)
- Herron M. M. (1988): Geochemical classification of terrigenous sands and shales from core or log data. *Journal of Sedimentary Petrology*, Vol. 58, 5, 820-829.
- Lužar-Oberiter, B., Mikes, T., Dunkl, I., Babić, Lj. Eynatten, H. (2012): Provenance of Cretaceous synorogenic sediments from the NW Dinarides (Croatia). *Swiss Journal of Geosciences*, 105, 377-399.
- McLennan, S. M., Hemming, S., McDaniel, D.K., Hanson, G.N. (1993): Geochemical approaches to sedimentation, provenance and tectonics. *Geological Society of America Special Papers*, 285, 21 – 40.
- McLennan, S. M. (2001): Relationships between the trace element composition of sedimentary rocks and upper continental crust: *Geochemistry Geophysics Geosystems*, 2, 1021-1024.
- Nesbitt, H. W., Young, G. M. (1984): Prediction of some weathering trends of plutonic and volcanic rocks based upon thermodynamic and kinetic considerations. *Geochimica et Cosmochimica Acta*, 48, 7, 1523-1534.
- Nesbitt, H. W., Young, G. M. (1989): Formation and diagenesis of weathering profiles. *Journal of Geology*, 97, 129 – 147.
- Palinkaš, L. A. Borojević Šoštarić, S., Strmić Palinkaš, S., Prochaska, W., Spangerberg, J., Cuna, S., Šinkovec, B. (2010): Permian-polysulphide-siderite-barite-haematite deposit Rude in Samoborska Gora Mts., Zagorje-Transdanubian zone of the Inner Dinarides. *Geologia Croatica*, 63, 1, 93–115.
- Pamić, J. (1993): Eoalpine to Nealpine magmatic and metamorphic processes in the northwestern Vardar Zone, the easternmost Periadriatic Zone and the southwestern Pannonian Basin. *Tectonophysics*, 226, 503-518.
- Pamić, J., Gušić, I., Jelaska, V. (1998): Geodynamic evolution of the Central Dinarides. *Tectonophysics*, 297, 251-268.
- Pettijohn, F. J., Potter, P. E., Siever, R. (1987): Sand and sandstone. Springer-Verlag, New York. 553 p.
- Rahman, M. J. J., Suzuki, S. (2007): Geochemistry of sandstones from the Miocene Surma Group, Bengal Basin, Bangladesh: Implications for Provenance, tectonic setting and weathering. *Geochemical Journal*, 41, 415-428.
- Roser, B. P., Korsch, R. J. (1986): Determination of tectonic setting of sandstone-mudstone suites using SiO₂ content and K₂O/Na₂O ratio. *Journal of Geology*, 94, 635-650.
- Roser, B. P., Korsch, R. J. (1988): Provenance signatures of sandstone-mudstone suites determined using discriminant function analysis of major-element data. *Chemical Geology*, 67, 119-139.
- Slovenec, D., Bermanec, V. (2006): Sistematska mineralogija-mineralogija silikata (*Systematic mineralogy-mineralogy of silicates*). Denona, Zagreb. 359 p. (*in Croatian*)
- Sun, S. S., McDonough, W.F. (1989): Chemical and isotopic systematics of oceanic basalts: implications for mantle composition and processes. *Geological Society, London, Special Publication*, 42, 313-345.
- Šikić, K., Basch, O., Šimunić, A., (1972): Tumač za Osnovnu geološku kartu SFRJ, list Zagreb (*Basic geological map of SFRJ, Geology of Zagreb*). Savezni geološki zavod, Beograd. (*in Croatian*)
- Šinkovec, B. (1956): Situacioni nacrt i geološko-jamska karta Rude kod Samobora 1:1000 (*Situational plan and geological-mine pit map of Rude near Samobor 1:1000*). Zavod za geološka istraživanja N. R. H. Zagreb.

- Šinkovec, B. (1971): Ležišta željezne i bakarne rude u Rudama (*Iron and copper ore deposits in Rude*). Geološki vjesnik, 24, 165-181. (in Croatian – English abstract)
- Taylor, S. R., McLennan, S. M. (1985): The continental crust: its composition and evolution: an examination of the geochemical record preserved in sedimentary rock. Blackwell scientific, 312 p., Oxford
- Tomljenović, B. (2002): Strukturne značajke Medvednice i Sasmoborskog gorja (*Structural features of Mt. Medvednica and Mt. Samoborska gora*). Dissertation, University of Zagreb, 208 p. (in Croatian – English abstract)
- Vernooij, M. G. C., Langenhorst, F. (2005): Experimental reproduction of tectonic deformation lamellae in quartz and comparison to shock-induced planar deformation features. Meteoritic and Planetary Science, 40, 9/10, 1353-1361.
- Vukotinović, L. (1855): Eisenwerk Rude bei Samobor (*Ironworks Rude near Samobor*). Jahrbuch der Geologischen Reichsanstalt, 6, 166, Wien. (in German)
- Vukotinović, L. (1873a): Kupfer- und Eisensteinbergbau in Rude bei Samobor (*Cooper and ironstone mining in Rude near Samobor*). Österreichische Zeitschrift für Berg- und Hüttenwesen, 8, 59-60. (in German)
- Vukotinović, L. (1873b): Rude bei Samobor in Croatien (*Rude near Samobor in Croatia*). Verhandlungen der Geologischen Reichsanstalt, 2, 26-30. Wien. (in German)
- Willingshofer, E., (2000): Extension in collisional orogenic belts: the Late Cretaceous evolution of the Alps and Carpathians. Doctoral thesis, Vrije University, Amsterdam, 146 p.

SAŽETAK

Petrološke karakteristike klastičnih taložnih stijena iz rudnika Sveta Barbara u Rudama kraj Samobora

U okviru ovoga istraživanja napravljene su petrografske i geokemijske analize klastičnih taložnih stijena iz rudnika bakra i željeza Sveta Barbara u Rudama kraj Samobora s ciljem da se klasificira i odredi podrijetlo sedimenata, kao i okolina formiranja klastičnih taložnih stijena te utjecaj hidrotermalnih fluida na njihova svojstva. Ukupno je prikupljeno osam uzoraka s različitih lokaliteta unutar rudnika, od čega je šest uzoraka detaljno analizirano. Rezultati su pokazali strukturnu i geokemijsku varijabilnost i nejednak intenzitet hidrotermalne alteracije u uzorcima. Na temelju petrografske analize tri stijene klasificirane su kao sublitoarenit, kvarcni arenit i kvarcna grauvska. Tri uzorka klasificirana su kao orudnjena breča, orudnjeni pješčenjak i orudnjeni siltozni pješčenjak zbog izrazite hidrotermalne alteracije i rudne mineralizacije. Petrografske i geokemijske analize pokazuju da su ishodišne stijene istraživanih klastičnih sedimenata bile felzične ($La/Sc = 0,9 - 6,2$; $Th/Sc = 1,3 - 2,4$), najvjerojatnije taložne, i moguće pretaložene. Stupanj trošenja ishodišnih stijena bio je vrlo visok (kemijski indeks alteracije – CIA = 52,1 – 81,3 %), a geotektonska pozicija sedimentnoga bazena vrlo je vjerojatno bila na pasivnome kontinentalnom rubu.

Ključne riječi:

klastične taložne stijene, petrografija i kemizam stijena, podrijetlo sedimenta, rudnik Sveta Barbara u Rudama, Samoborsko gorje

Author's contribution

This paper is based on the results obtained in the scope of investigation for Bachelor thesis of principal researcher **Šime Bilić (1)** (Mag. of Geology, Assistant, PhD student at the Faculty of Mining, Geology and Petroleum Engineering, University of Zagreb, Petrology and Geochemistry). He collected the samples in the field, provided petrographic investigations and presentation of geochemical data in tables and diagrams and wrote the manuscript. **Vesnica Garašić (2)** (Ph.D., Associate Professor at the Faculty of Mining, Geology and Petroleum Engineering, University of Zagreb, Petrology and Geochemistry), the supervisor of Bachelor thesis provided funding for the field work and geochemical analyses, participated in the field work, provided suggestions in the interpretation of the research results and graphic representations of data and participated in the writing of the discussion and conclusion sections.